

TM 11-6625-2575-24P

TECHNICAL MANUAL

**ORGANIZATIONAL, DIRECT SUPPORT, AND GENERAL SUPPORT
MAINTENANCE REPAIR PARTS AND SPECIAL TOOLS LIST
(INCLUDING DEPOT MAINTENANCE REPAIR PARTS AND SPECIAL TOOLS)**

FOR

**GENERATOR, SWEEP SIGNAL AN/USM-203A
(NSN 6625-00-148-8185)**

HEADQUARTERS, DEPARTMENT OF THE ARMY

JUNE 1980

TECHNICAL MANUAL }
 No. 11-6625-2575-24P }

HEADQUARTERS
 DEPARTMENT OF THE ARMY
 WASHINGTON, DC, 30 June 1980

**ORGANIZATIONAL, DIRECT SUPPORT, AND GENERAL SUPPORT
 MAINTENANCE REPAIR PARTS AND SPECIAL TOOLS LISTS
 (INCLUDING DEPOT MAINTENANCE REPAIR PARTS AND SPECIAL TOOLS)
 FOR
 GENERATOR, SWEEP SIGNAL AN/USM-203A
 (NSN 6625-00-148-8185)
 Current as of 13 December 1979**

REPORTING OF ERRORS

You can help improve this manual. If you find any mistakes or know of a way to improve the procedures, please let us know. Mail your DA Form 2028 (Recommended Changes to Publications and Blank Forms), or DA Form 2028-2 located in back of this manual direct to: Commander, US Army Communications and Electronics Materiel Readiness Command, ATTN: DRSEL-ME-MQ, Fort Monmouth, NJ 07703.

In either case a reply will be furnished direct to you.

SECTION		Page	Illus Figure
	I. INTRODUCTION	1	
	II. Repair parts list,	5	
GROUP	00 Generator, Sweep Signal AN/USM-203A	5	1
	01 Chassis assembly (A4)	9	2
	02 Main circuit board assembly (A4A8)	13	3
	03 Amplifier marker assembly (A4A7)	19	4
	0301 1 MHz marker assembly (A1)	21	5
	030101 Circuit board assembly (A1A1)	25	6
	0302 10 MHz marker assembly (A2)	27	7
	030201 Circuit board assembly (A2A1)	31	8
	0303 50 MHz marker assembly (A3)	33	9
	030301 Circuit board assembly (A3A1)	37	10
	04 Video amplifier (A4A2)	39	11
	0401 Circuit board assembly (A4A2A1)	43	12
	05 Fixed oscillator (A4A3)	45	13
	06 Monitor mixer (A4A5)	49	14
	07 Variable oscillator(A4A6)	51	15
	08 Sacking panel assembly (A4A11) (rear panel)	55	16
	0801 Attenuator (A4A11A1)	59	17
	0802 Bandswitch assembly (A4A11A2)	61	18
	0803 Detector (A4A1A1)	63	19
SECTION	III. Special tools list (Not applicable)		
	IV. National stock number and part number index	64	

* This manual supersedes TM 11-6625-2575-24P, 27 September 1976.

SECTION I INTRODUCTION

1. Scope

This manual lists spares and repair parts; special tools; special test, measurement, and diagnostic equipment (TMDE), and other special support equipment required for performance of organizational, direct support, and general support maintenance of the AN/USM-203A. It authorizes the requisitioning and issue of spares and repair parts as indicated by the source and maintenance codes.

2. General

This Repair Parts and Special Tools List is divided into the following sections:

a. Section II. Repair Parts List. A list of spares and repair parts authorized for use in the performance of maintenance. The list also includes parts which must be removed for replacement of the authorized parts. Parts lists are composed of functional groups in numeric sequence, with the parts in each group listed in figure and item number sequence.

b. Section III. Special Tools List. Not applicable.

c. Section IV. National Stock Number and Part Number Index. A list, in National item identification number (NIIN) sequence, of all National stock numbers (NSN) appearing in the listings, followed by a list, in alphameric sequence, of all part numbers appearing in the listings. National stock numbers and part numbers are cross-referenced to each illustration figure and item number appearance.

3. Explanation of Columns

a. Illustration. This column is divided as follows:

(1) *Figure number.* Indicates the figure number of the illustration on which the item is shown.

(2) *Item number.* The number used to identify item called out in the illustration.

b. Source, Maintenance, and Recoverability (SMR) Codes.

(1) *Source code.* Source codes indicate the manner of acquiring support items for maintenance, repair, or overhaul of end items. Source codes are entered in the first and second positions of the Uniform SMR Code format as follow

<i>Code</i>	<i>Definition</i>
PA	-Item procured and stocked for anticipated or known
XD	-A support item that is not stocked. When required, item will be procured through normal supply channels.

NOTE

Cannibalization or salvage may be used as a source of supply for any items source coded above except those coded XA and aircraft support items as restricted by AR 700-42.

(2) *Maintenance code.* Maintenance codes are assigned to indicate the levels of maintenance authorized to USE and REPAIR support items. The maintenance codes are entered in the third and fourth positions of the Uniform SMR Code format as follows:

(a) The maintenance code entered in the third position will indicate the lowest maintenance level authorized to remove, replace, and use the support item. The maintenance code entered in the third position will indicate one of the following levels of maintenance:

<i>Code</i>	<i>Application/Explanation</i>
O	-Support item is removed, replaced, used at the organizational level.
H	-Support item is removed, replaced, used at the general support level.
D	-Support items that are removed, replaced, used at depot, mobile depot, specialized repair activity only.

(b) The maintenance code entered in the fourth position indicates whether the item is to be repaired and identifies the lowest maintenance level with the capability to perform complete repair (i.e., all authorized maintenance functions). This position will contain one of the following maintenance codes:

<i>Code</i>	<i>Application/Explanation</i>
H	-The lowest maintenance level capable of complete repair of the support item is the general support level.
D	-The lowest maintenance level capable of complete repair of the support item is the depot level.
Z	-Nonreparable. No repair is authorized.

(3) *Recoverability code.* Recoverability codes are assigned to support items to indicate the disposition action on unserviceable items. The recoverability code is entered in the fifth position of the Uniform SMR Code format as follows

<i>Recoverability codes</i>	<i>Definition</i>
Z	-Nonreparable item. When unserviceable, condemn and dispose at the level indicated in position 3.
H	-Reparable item. When uneconomically repairable, condemn and dispose at the general support level.
D	-Reparable item. When beyond lower level repair capability, return to depot. Condemnation and disposal not authorized below depot level.
L	-Reparable item. Repair, condemnation, and disposal not authorized below depot/specialized repair activity level.

c. National Stock Number. Indicates the National stock number assigned to the item and will be used for requisitioning purposes.

d. Part Number. Indicates the primary number used by the manufacturer (individual, company, firm, corporation, or Government activity), which controls the design and characteristics of the item by means of its engineering drawings, specifications, standards, and inspection requirements to identify an item or range of items.

NOTE

When a stock numbered item is requisitioned, the repair part received may have a different part number than the part being replaced.

e. Federal Supply Code for Manufacturer (FSCM). The FSCM is a 5-digit numeric code listed in SB 708-41/-42 which is used to identify the manufacturer, distributor, or Government agency, etc.

f. Description. Indicates the Federal item name and, if required, a minimum description to identify the item.

g. Unit of Measure (U/M). Indicates the standard of the basic quantity of the listed item as used in performing the actual maintenance function. This measure is expressed by a two-character alphabetical abbreviation (e.g., ea, in, pr, etc). When the unit of measure differs from the unit of issue, the lowest unit of issue that will satisfy the required units of measure will be requisitioned.

h. Quantity Incorporated in Unit. Indicates the quantity of the item used in the breakout shown on the illustration figure, which is prepared for a functional group, subfunctional group, or an assembly.

4. Special Information

The following publication pertains to the AN/USM-203A

and its components:

TM 11-6625-2575-14, Generator, Sweep Signal AN/USM-203A.

5. How to Locate Repair Parts

a. When National stock number or part number is unknown.

(1) *First.* Using the table of contents, determine the functional group within which the item belongs. This is necessary since illustrations are prepared for functional groups and listings are divided into the same groups.

(2) *Second.* Find the illustration covering the functional group to which the item belongs.

(3) *Third.* Identify the item on the illustration and note the illustration figure and item number of the item.

(4) *Fourth.* Using the Repair Parts Listing, find the figure and item number noted on the illustration.

b. When National stock number or part number is known.

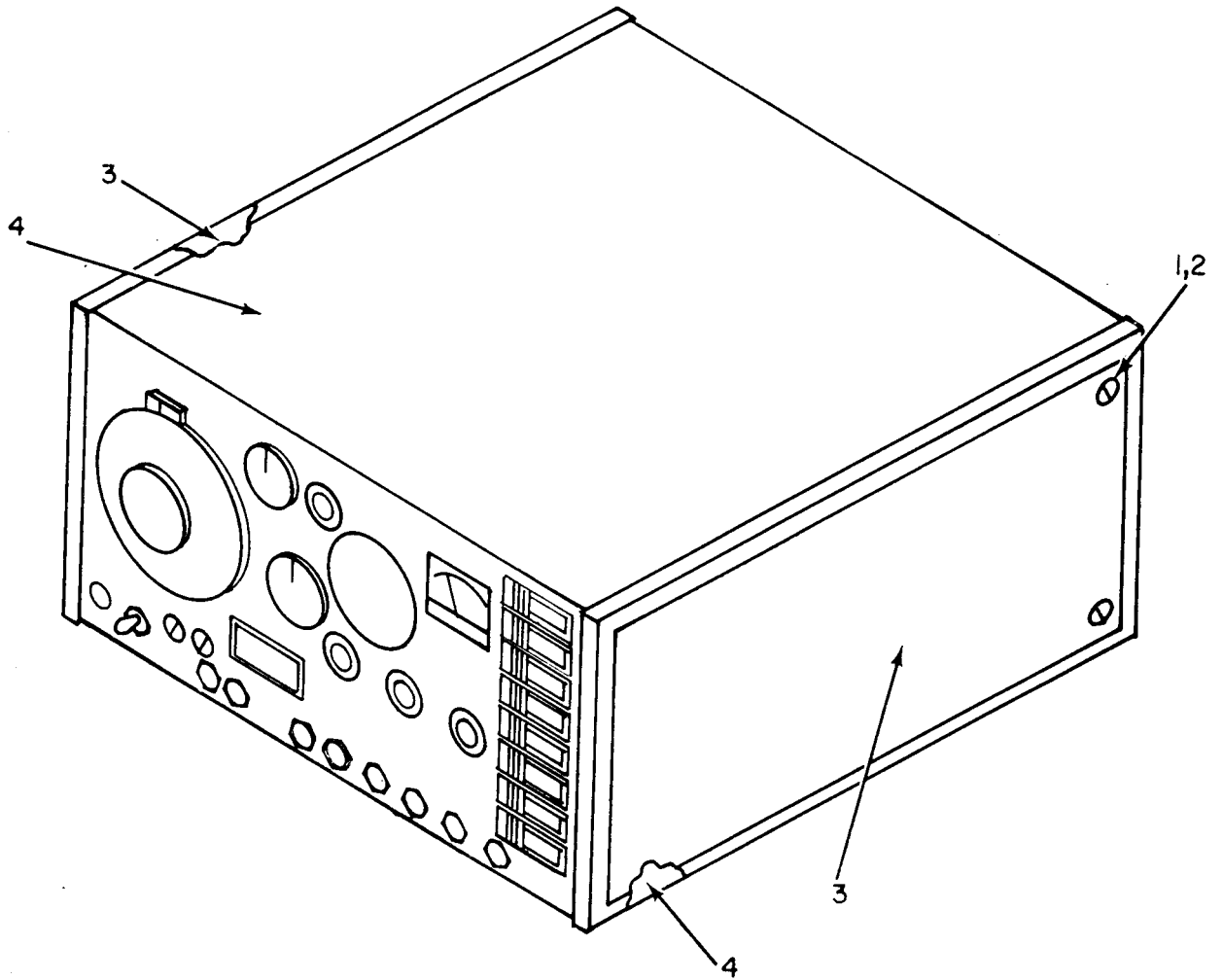
(1) *First.* Using the Index of National Stock Numbers and Part Numbers, find the pertinent National stock number or part number. This index is in NIIN sequence followed by a list of part numbers in alphameric sequence, cross-referenced to the illustration figure number and item number.

(2) *Second.* After finding the figure and item number, locate the figure and item number in the repair parts list.

6. Abbreviations

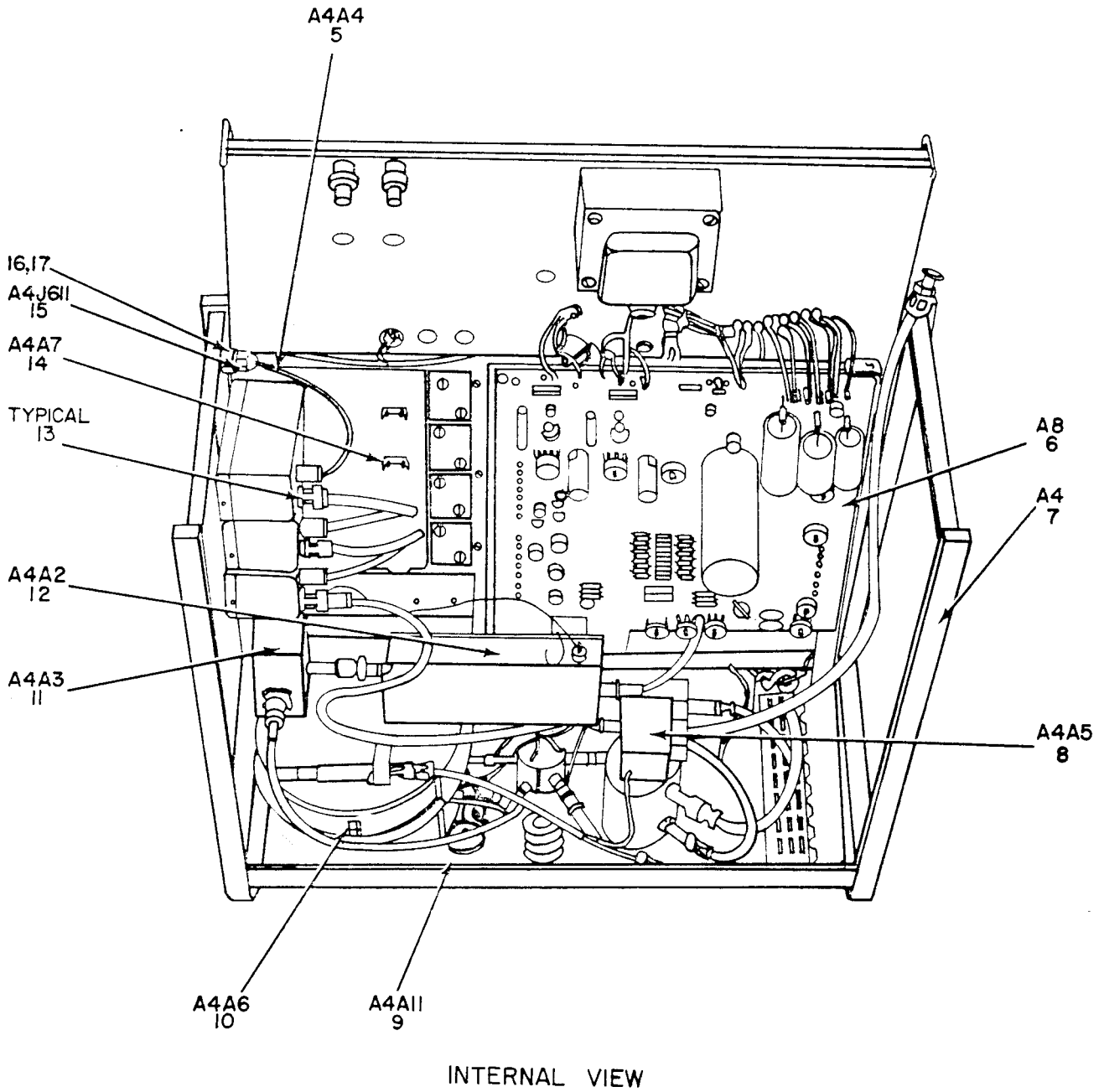
Not applicable.

(Next printed page is 4.1.)



EL6CD001

Figure 1. Generator, Sweep Signal AN/USM-203A (Sheet 1 of 2).



EL6CD002

Figure 1. Generator, Sweep Signal AN/USM-203A (Sheet 2 of 2),

SECTION II (1) ILLUSTRATION		(2)	(3)	(4)	(5)	(6)	(7)	(8)
FIG NO	ITEM NO	SMR CODE	NATIONAL STOCK NUMBER	PART NUMBER	FSCM	DESCRIPTION	USABLE ON CODE U/M	QTY INC IN UNIT
						GROUP 00 GENERATOR, SWEEP SIGNAL		
						AN/USM-203A		
1	1	XDHZZ		050-102	23042	SCREW	EA	4
1	2	XDHZZ		1305NP	73734	WASHER	EA	4
1	3	XDHZZ		C212-005-02	23042	ENCLOSURE	EA	2
1	4	XDHZZ		C212-006-01	23042	ENCLOSURE COVER	EA	2
1	5	XDHZZ		A204-250	23042	CABLE SET, COAXIAL	EA	1
1	6	XDHHH		A204-428	23042	MAIN CIRCUIT BOARD	EA	1
1	7	XDHHH		A204-696	23042	CHASSIS ASSEMBLY	EA	1
1	8	PAHHH	6625-00-173-2285	A204-055	23042	MONITOR MIXER	EA	1
1	9	XDHHH		A204-698	23042	BACKING PANEL	EA	1
1	10	PAHDL	6625-00-106-9601	A204-519	23042	VARIABLE OSCILLATOR	EA	1
1	11	PAHHH	6625-00-173-2283	D204-052	23042	FIXED OSCILLATOR	EA	1
1	12	PAHDD	6625-00-106-9599	A204-446	23042	AMPLIFIER, VIDEO	EA	1
1	13	PAHZZ	5935-00-681-5685	UG88CU	80058	CONNECTOR	EA	14
1	14	XDHHH		A204-421	23042	AMPLIFIER MARKER	EA	1
1	15	PAHZZ	5935-00-913-7551	5070-1	09408	CONNECTOR	EA	1
1	16	XDHZZ		050-040	23042	WASHER	EA	4
1	17	XDHZZ	5310-00-161-0765	9027NP	73734	NUT	EA	4

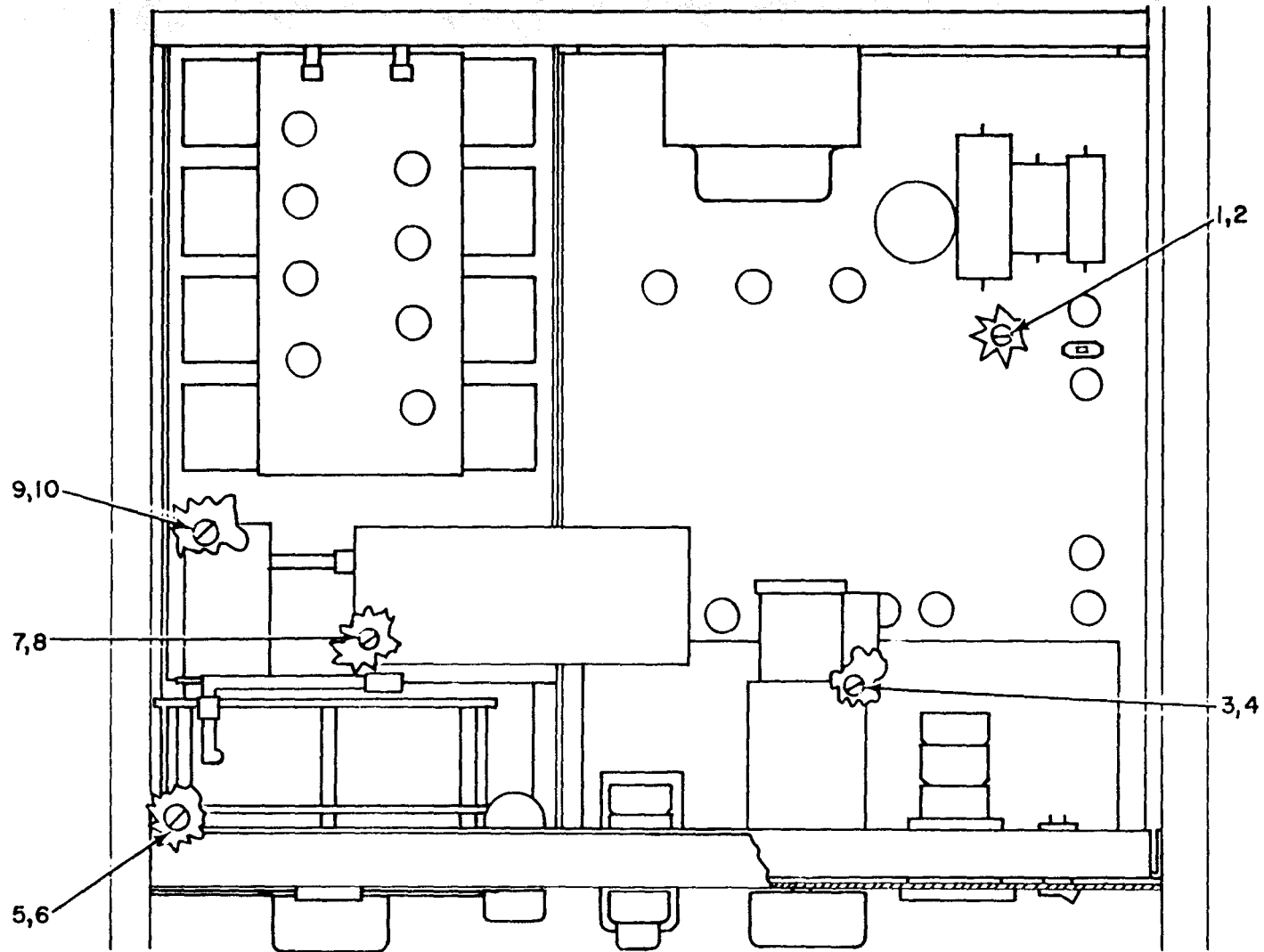
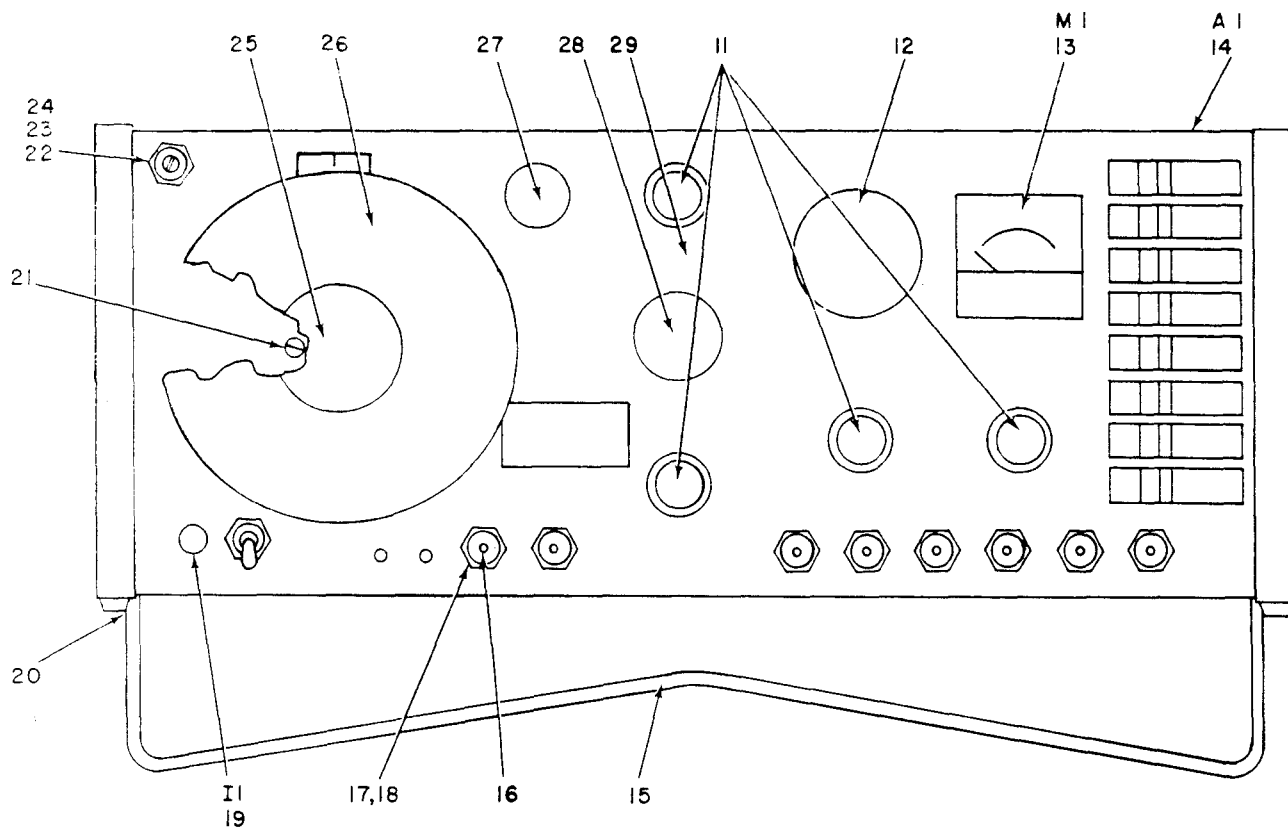


Figure 2. Chassis Assembly (A4) (Sheet 1 of 2).

EL6CD003

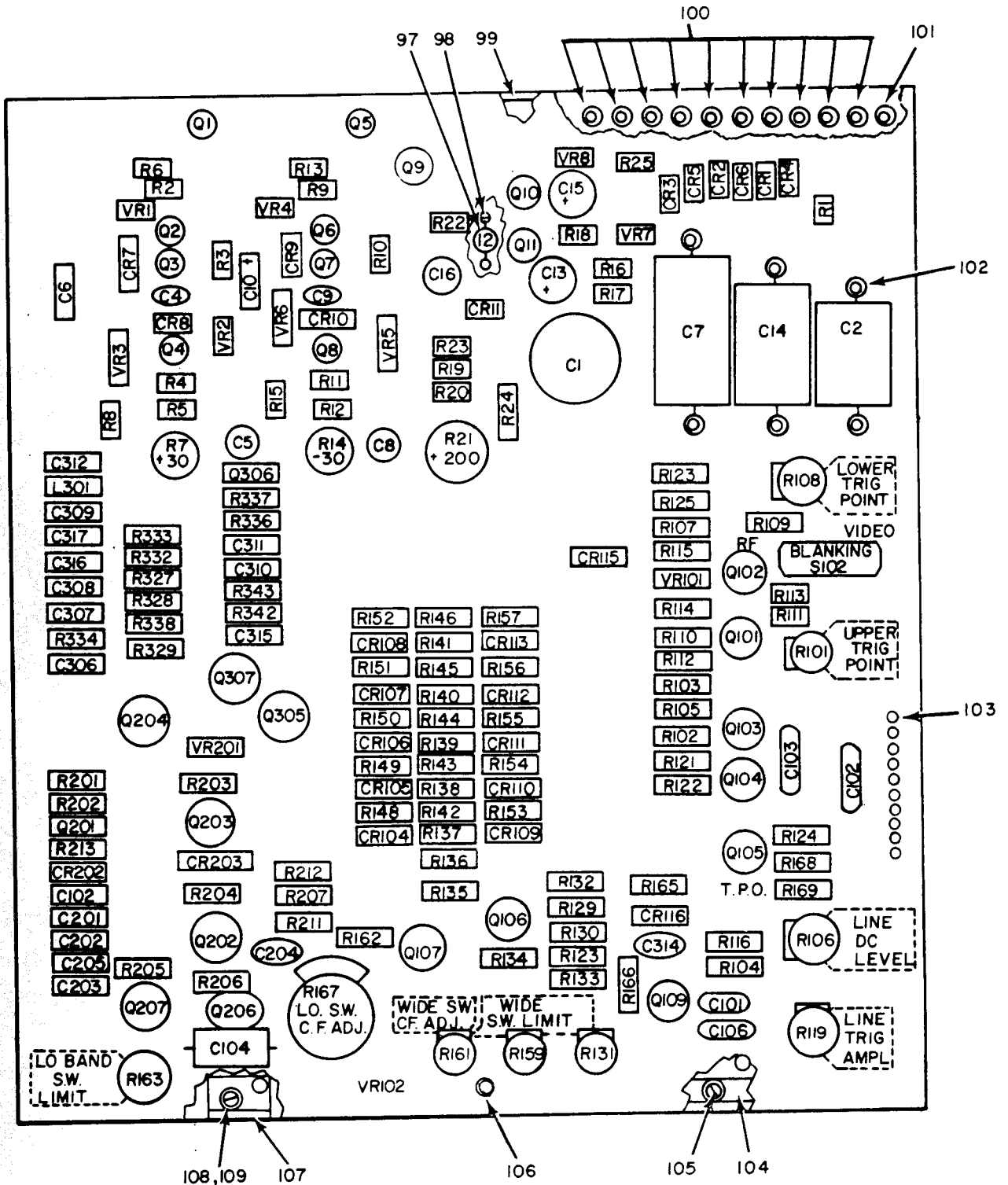
TM 11-6625-2575-24P



EL6CD004

Figure 2. Chassis Assembly (A4) (Sheet 2 of 2).

SECTION II (1) ILLUSTRATION		(2)	(3)	(4)	(5)	(6)	(7)	(8)
FIG NO	ITEM NO	SMR CODE	NATIONAL STOCK NUMBER	PART NUMBER	FSCM	DESCRIPTION	USABLE ON CODE U/M	QTY INC IN UNIT
GROUP 01 CHASSIS ASSEMBLY (A4)								
2	1	XDHZZ		12021NP	73734	SCREW	EA	1
2	2	XDHZZ		050-140	23042	NUT	EA	1
2	3	XDHZZ	5305-00-054-6650	MS51957-26	96906	SCREW	EA	11
2	4	XDHZZ		1302NP	73734	WASHER	EA	3
2	5	XDHZZ	5305-00-054-6655	MS51957-31	96906	SCREW	EA	3
2	6	XDHZZ	5310-00-011-1041	MS35338-79	96906	WASHER	EA	5
2	7	XDHZZ		12043NP	73734	SCREW	EA	10
2	8	XDHZZ		8006NP	73734	NUT	EA	2
2	9	XDHZZ		12041NP	73734	SCREW	EA	2
2	10	XDHZZ		1304NP	73734	WASHER	EA	12
2	11	XDHZZ		042-006	23042	KNOB	EA	4
2	12	XDHZZ	5355-00-146-9602	8042-004-16	23042	KNOB	EA	1
2	13	PAHZZ	6625-00-001-1378	A043-007	23042	METER	EA	1
2	14	XDHZZ		A204-697	23042	FRONT PANEL	EA	1
2	15	XDHZZ		A209-127	23042	BRACKET	EA	1
2	16	PAHZZ	5935-00-913-7551	5070-1	09408	CONNECTOR	EA	1
2	17	XDHZZ		050-040	23042	WASHER	EA	2
2	18	XDHZZ	5310-00-161-0765	9027NP	73734	NUT	EA	10
2	19	XDHZZ	6210-00-107-5166	6063-001-634	72765	INDICATOR	EA	1
2	20	XDHZZ	5305-00-054-5646	MS51957-12	96906	SCREW	EA	2
2	21	XDHZZ	5305-00-054-5647	MS51957-13	96906	SCREW, MACHINE	EA	3
2	22	XDHZZ		2185NP	73734	SCREW	EA	4
2	23	XDHZZ		1306NP	73734	WASHER	EA	4
2	24	XDHZZ		8011NP	73734	NUT	EA	4
2	25	XDHZZ		A042-005	23042	KNOB	EA	1
2	26	XDHZZ		A024-023	23042	DIAL	EA	1
2	27	XDHZZ	5355-00-147-3502	B042-004-09	23042	KNOB	EA	1
2	28	XDHZZ	5355-00-146-9601	B042-004-13	23042	KNOB	EA	1
2	29	XDHZZ		D218-057	23042	FRONT PANEL	EA	1



EL6CD006

Figure 3. Main Circuit Board Assembly (A4A8) (Sheet 1 of 2).

REF. DES.	ITEM NO.	REF. DES.	ITEM NO.	REF. DES.	ITEM NO.	REF. DES.	ITEM NO.	REF. DES.	ITEM NO.	REF. DES.	ITEM NO.	REF. DES.	ITEM NO.	REF. DES.	ITEM NO.	REF. DES.	ITEM NO.	REF. DES.	ITEM NO.	REF. DES.	ITEM NO.
C1	1	C203	15	CR7	19	I2	21	Q202	26	R13	35	R108	51	R133	69	R154	75	R211	57	VR6	93
C2	2	C204	15	CR8	19	L301	22	Q203	26	R14	36	R109	50	R134	70	R155	76	R212	60	VR7	94
C4	3	C205	14	CR9	19	Q2	23	Q204	28	R15	32	R110	52	R135	71	R156	77	R213	87	VR8	95
C5	4	C306	15	CR10	19	Q3	24	Q206	30	R16	37	R111	53	R136	72	R157	58	R327	79	VR101	92
C6	5	C307	14	CR11	19	Q4	24	Q207	30	R17	38	R112	54	R137	58	R159	78	R328	88	VR102	95
C7	6	C308	14	CR102	19	Q6	24	Q305	30	R18	39	R113	55	R138	58	R161	36	R329	89	VR201	96
C8	4	C309	14	CR104	19	Q7	23	Q306	30	R19	40	R114	56	R139	58	R162	79	R332	88		
C9	3	C310	15	CR105	19	Q8	23	Q307	30	R20	41	R115	57	R140	58	R163	80	R333	90		
C10	5	C311	15	CR106	19	Q9	25	R1	31	R21	42	R116	58	R141	58	R165	81	R334	53		
C13	7	C312	15	CR107	19	Q10	26	R2	32	R22	43	R119	59	R142	58	R166	47	R336	53		
C14	8	C314	16	CR108	19	Q11	26	R3	33	R23	44	R121	60	R143	58	R167	82	R337	47		
C15	7	C315	15	CR109	19	Q101	27	R4	34	R24	45	R122	61	R144	58	R168	83	R338	90		
C16	9	C316	14	CR110	19	Q102	27	R5	35	R25	39	R123	62	R145	58	R169	54	R342	53		
C101	10	C317	14	CR111	19	Q103	27	R6	35	R101	42	R124	63	R146	58	R201	84	R343	53		
C102	11	CR1	17	CR112	19	Q104	28	R7	36	R102	46	R125	64	R148	57	R202	85	S102	91		
C103	12	CR2	18	CR113	19	Q105	28	R8	32	R103	46	R128	65	R149	73	R203	74	VR1	92		
C104	13	CR3	18	CR115	19	Q106	26	R9	32	R104	47	R129	66	R150	54	R204	86	VR2	93		
C106	10	CR4	17	CR116	20	Q107	26	R10	33	R105	48	R130	67	R151	48	R205	57	VR3	93		
C201	14	CR5	18	CR202	19	Q109	29	R11	34	R106	49	R131	51	R152	56	R206	79	VR4	92		
C202	14	CR6	18	CR203	19	Q201	26	R12	35	R107	50	R132	68	R153	74	R207	79	VR5	93		

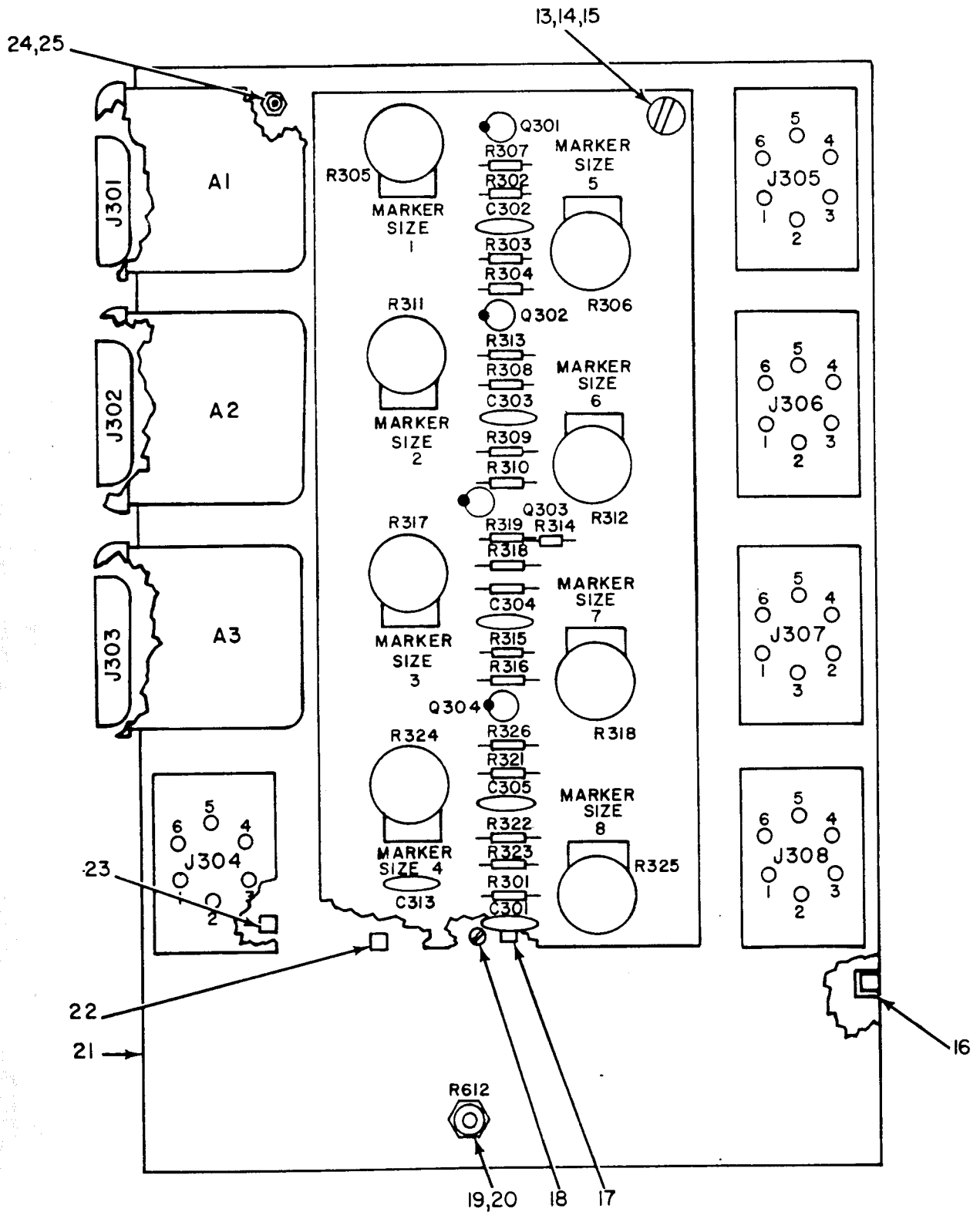
EL6CD006

Figure 3. Main Circuit Board Assembly (A4A8) (Sheet 2 of 2).

SECTION II (1) ILLUSTRATION (A) (B) FIG ITEM NO NO		(2) SMR CODE	(3) NATIONAL STOCK NUMBER	(4) PART NUMBER	(5) FSCM	(6) DESCRIPTION	(7) USABLE ON CODE U/M	(8) QTY INC IN UNIT
GROUP 02 MAIN CIRCUIT BOARD ASSEMBLY (A4A8)								
3	1	PAHZZ	5910-00-493-6506	MEP53867	12674	CAPACITOR	EA	1
3	2	PAHZZ	5910-00-654-3895	EMW2052-250-75	12674	CAPACITOR	EA	1
3	3	PAHZZ	5910-00-577-6040	012-052	23042	CAPACITOR	EA	2
3	4	PAHZZ	5910-00-441-7949	MTV50DE50	37942	CAPACITOR, FIXED, ELE	EA	2
3	5	XDHZZ	5910-00-702-0568	30D107G012DC4	56289	CAPACITOR	EA	2
3	6	XDHZZ		EMW2868-450-90	12674	CAPACITOR	EA	1
3	7	XDHZZ		012-023	23042	CAPACITOR	EA	2
3	8	XDHZZ		EMW2452-250-50	12674	CAPACITOR	EA	1
3	9	XDHZZ		012-024	23042	CAPACITOR	EA	1
3	10	PAHZZ	5910-00-100-7808	225P10391WB3	80183	CAPACITOR	EA	2
3	11	PAHZZ	5910-00-043-1365	DMF1P22-10	14655	CAPACITOR	EA	1
3	12	PAHZZ	5910-00-850-3894	KIR5C35K	05397	CAPACITOR	EA	1
3	13	PAHZZ	5910-00-827-1209	30D107G025DD2	56289	CAPACITOR	EA	1
3	14	XDHZZ		SMGMV24161	91418	CAPACITOR	EA	8
3	15	XDHZZ		TA28425	91418	CAPACITOR	EA	7
3	16	XDHZZ		012-013	23042	CAPACITOR	EA	1
3	17	XDHZZ		E8	84970	DIODE	EA	2
3	18	XDHZZ		A13D2	03508	DIODE	EA	4
3	19	XDHZZ		1N457A	28107	DIODE	EA	19
3	20	XDHZZ		1N3287	80131	DIODE	EA	1
3	21	PAOZZ	5960-00-407-6018	Z82R10	74276	BULB	EA	1
3	22	XDHZZ		H0-813-5	93292	INDUCTOR	EA	1
3	23	PAHZZ	5961-00-931-8259	40362	95303	TRANSISTOR	EA	3
3	24	XDHZZ	5961-00-985-9073	2N3053	95303	TRANSISTOR	EA	3
3	25	PAHZZ	5961-00-828-0719	MJE340	04713	TRANSISTOR	EA	1
3	26	PAHZZ	5961-00-044-4808	2N3440	95303	TRANSISTOR	EA	7
3	27	PAHZZ	5961-00-930-5325	2N3565	28584	TRANSISTOR	EA	3
3	28	PAHZZ	5961-00-947-8263	2N3568	80131	TRANSISTOR	EA	3
3	29	XDHZZ		F1152	05397	TRANSISTOR	EA	1
3	30	PAHZZ	5961-00-103-3981	2N3644	28584	TRANSISTOR	EA	5
3	31	PAHZZ	5905-00-228-6081	RCR32G121JS	81349	RESISTOR, FIXE	EA	1
3	32	PAHZZ	5905-00-141-1168	RCR20G222JS	81349	RESISTOR, FIXE	EA	4
3	33	PAHZZ	5905-00-454-2875	RCR32G180JS	81349	RESISTOR, FIXE	EA	2
3	34	PAHZZ	5905-00-104-8348	RCR20G332JS	81349	RESISTOR, FIXE	EA	2
3	35	PAHZZ	5905-00-141-1116	RCR20G562JS	81349	RESISTOR, FIXE	EA	4
3	36	PAHZZ	5905-00-102-5160	UPE200RE1K0HMS	71450	RESISTOR, VARIABLE	EA	3
3	37	PAHZZ	5905-00-935-8545	RCR20G183JS	81349	RESISTOR, FIXE	EA	1
3	38	PAHZZ	5905-00-106-1245	RCR32G272JS	81349	RESISTOR, FIXE	EA	1
3	39	PAHZZ	5905-00-106-1282	RCR20G223JS	81349	RESISTOR, FIXE	EA	2

SECTION II (1) ILLUSTRATION		(2)	(3)	(4)	(5)	(6)	(7)	(8)
FIG NO	(B) ITEM NO	SMR CODE	NATIONAL STOCK NUMBER	PART NUMBER	FSCM	DESCRIPTION	USABLE ON CODE U/M	QTY INC IN UNIT
3	40	PAHZZ	5905-00-369-6929	RCR32G473JS	81349	RESISTOR, FIXE	EA	1
3	41	PAHZZ	5905-00-247-8735	RCR32G563JS	81349	RESISTOR, FIXE	EA	1
3	42	PAHZZ	5905-00-457-0973	UPE200RE25K0HMS	71450	RESISTOR, VARIABLE	EA	2
3	43	PAHZZ	5905-00-106-9344	RCR20G101JS	81349	RESISTOR, FIXE	EA	1
3	44	PAHZZ	5905-00-252-1050	RCR32G393JS	81349	RESISTOR, FIXE	EA	1
3	45	PAHZZ	5905-00-104-8333	RCR20G184JS	81349	RESISTOR, FIXE	EA	1
3	46	PAHZZ	5905-00-110-0388	RCR07G104JS	81349	RESISTOR, FIXE	EA	2
3	47	PAHZZ	5905-00-116-8554	RCR07G105JS	81349	RESISTOR, FIXE	EA	3
3	48	PAHZZ	5905-00-201-6735	RC09GF473J	80058	RESISTOR, FIXE	EA	2
3	49	PAHZZ	5905-00-720-3002	UPE200RE1MOHMS	71450	RESISTOR, VARIABLE, N	EA	1
3	50	PAHZZ	5905-00-106-1356	RCR07G152JS	81349	RESISTOR, FIXE	EA	2
3	51	PAHZZ	5905-00-102-5154	UPE200RE2K0HMS	71450	RESISTOR, VARIABLE	EA	2
3	52	PAHZZ	5905-00-110-7620	RCR07G102JS	81349	RESISTOR, FIXE	EA	1
3	53	PAHZZ	5905-00-106-3666	RCR07G103JS	81349	RESISTOR, FIXE	EA	5
3	54	PAHZZ	5905-00-118-4559	RCR07G333JS	81349	RESISTOR, FIXE	EA	3
3	55	PAHZZ	5905-00-119-3505	RCR07G683JS	81349	RESISTOR, FIXE	EA	1
3	56	PAHZZ	5905-00-106-1357	RCR07G563JS	81349	RESISTOR, FIXE	EA	2
3	57	PAHZZ	5905-00-116-8556	RCR07G223JS	81349	RESISTOR, FIXE	EA	4
3	58	PAHZZ	5905-00-111-1678	RCR07G564JS	81349	RESISTOR, FIXE	EA	12
3	59	PAHZZ	5905-00-720-3003	048-054	23042	RESISTOR, VARIABLE, N	EA	1
3	60	PAHZZ	5905-00-104-8358	RCR07G8822JS	81349	RESISTOR, FIXE	EA	2
3	61	PAHZZ	5905-00-131-1255	RCR07G122JS	81349	RESISTOR, FIXE	EA	1
3	62	PAHZZ	5905-00-935-8539	RCR20G202JS	81349	RESISTOR, FIXE	EA	1
3	63	PAHZZ	5905-00-141-1183	RCR07G101JS	81349	RESISTOR, FIXE	EA	1
3	64	PAHZZ	5905-00-114-5393	RC10BF224K	80058	RESISTOR, FIXED, COMP	EA	1
3	65	PAHZZ	5905-00-110-0310	RCGF292K	80058	RESISTOR, FIXED, COMP	EA	1
3	66	PAHZZ	5905-00-141-0595	RCR20G472JS	81349	RESISTOR, FIXED, COMP	EA	1
3	67	PAHZZ	5905-00-106-1273	RCR20G153JS	81349	RESISTOR, FIXE	EA	1
3	68	PAHZZ	5905-00-141-1130	RCR20G272JS	81349	RESISTOR, FIXE	EA	1
3	69	PAHZZ	5905-00-110-0196	RCR20G102JS	81349	RESISTOR, FIXE	EA	1
3	70	PAHZZ	5905-00-141-0592	RCR20G122JS	81349	RESISTOR, FIXE	EA	1
3	71	PAHZZ	5905-00-249-3663	RCR42GF683J	81349	RESISTOR, FIXE	EA	1
3	72	PAHZZ	5905-00-247-8715	RCR32G224JS	81349	RESISTOR, FIXE	EA	1
3	73	PAHZZ	5905-00-119-3504	RCR07G273JS	81349	RESISTOR, FIXE	EA	1
3	74	PAHZZ	5905-00-435-6374	RCR07G823JS	81349	RESISTOR, FIXE	EA	2
3	75	PAHZZ	5905-00-400-4528	RCR07G124JS	81349	RESISTOR, FIXE	EA	1
3	76	PAHZZ	5905-00-114-5344	RCR07G184JS	81349	RESISTOR, FIXE	EA	1
3	77	PAHZZ	5905-00-485-4545	RCR07G334JS	81349	RESISTOR, FIXE	EA	1
3	78	XDZZZ	5905-00-114-0711	UPE200RE5K0HMS	71450	RESISTOR, VARIABLE	EA	1
3	79	PAHZZ	5905-00-114-0711	RCR07G472JS	81349	RESISTOR, FIXE	EA	4

SECTION II (1) ILLUSTRATION		(2)	(3)	(4)	(5)	(6)	(7)	(8)
FIG NO	ITEM NO	SMR CODE	NATIONAL STOCK NUMBER	PART NUMBER	FSCM	DESCRIPTION	USABLE ON CODE U/M	QTY INC IN UNIT
3	80	PAHZZ	5905-00-102-5159	UPE200RE250KOHMS	71450	RESISTOR, VARIABLE	EA	1
3	81	PAHZZ	5905-00-126-6694	RCR07G475JS	81349	RESISTOR, FIXE	EA	1
3	82	PAHZZ	5905-00-995-6406	UPM45-1K0HMS	71450	RESISTOR, VARIABLE	EA	1
3	83	PAHZZ	5905-00-106-1278	RCR07G123JS	81349	RESISTOR, FIXE	EA	1
3	84	PAHZZ	5905-00-135-6045	RCR07G330JS	81349	RESISTOR, FIXE	EA	1
3	85	PAHZZ	5905-00-116-8555	RCR07G153JS	81349	RESISTOR, FIXE	EA	1
3	86	PAHZZ	5905-00-135-6046	RCR07G681JS	81349	RESISTOR, FIXE	EA	1
3	87	PAHZZ	5905-00-104-8363	RCR07G820JS	81349	RESISTOR, FIXE	EA	1
3	88	PAHZZ	5905-00-105-7765	RCR07G224JS	81349	RESISTOR, FIXE	EA	2
3	89	PAHZZ	5905-00-114-0710	RCR07G331JS	81349	RESISTOR, FIXE	EA	1
3	90	PAHZZ	5905-00-119-3503	RCR07G271JS	81349	RESISTOR, FIXE	EA	2
3	91	PAHZZ	5930-00-919-1755	G126	79727	SWITCH, SLIDE	EA	1
3	92	PAHZZ	5961-00-839-9589	1N708A	80131	DIODE	EA	3
3	93	PAHZZ	5961-00-105-5488	VR7A	84970	DIODE	EA	4
3	94	PAHZZ	5961-00-948-5977	VR18A	84970	DIODE	EA	1
3	95	PAHZZ	5961-00-022-7632	VR15A	84970	DIODE	EA	2
3	96	PAHZZ	5961-00-153-4441	VR28A	84970	DIODE	EA	1
3	97	XDHZZ		029-007	23042	INSTRUMENT BAIL	EA	1
3	98	XDHZZ	5305-00-140-2163	050-22	23042	SCREW	EA	6
3	99	XDHZZ		D212-004-16	23042	ENCLOSURE, RAIL	EA	1
3	100	XDHZZ		A204-437	23042	WIRING HARNESS	EA	1
3	101	XDHZZ	5940-00-280-0601	2022C	83330	TERMINAL, TURRET	EA	2
3	102	XDHZZ	5940-00-727-3107	2020B	83330	TERMINAL	EA	23
3	103	XDHZZ		2032B	83330	TERMINAL	EA	70
3	104	XDHZZ		0212-004-09	23042	ENCLOSURE	EA	1
3	105	XDHZZ		2185NP	73734	SCREW	EA	8
3	106	XDHZZ		2014A	83330	TERMINAL	EA	1
3	107	XDHZZ		C209-007	23042	BRACKET	EA	4
3	108	XDHZZ		12043NP	73734	SCREW	EA	16
3	109	XDHZZ		1304NP	73734	WASHER	EA	16



EL6CD007

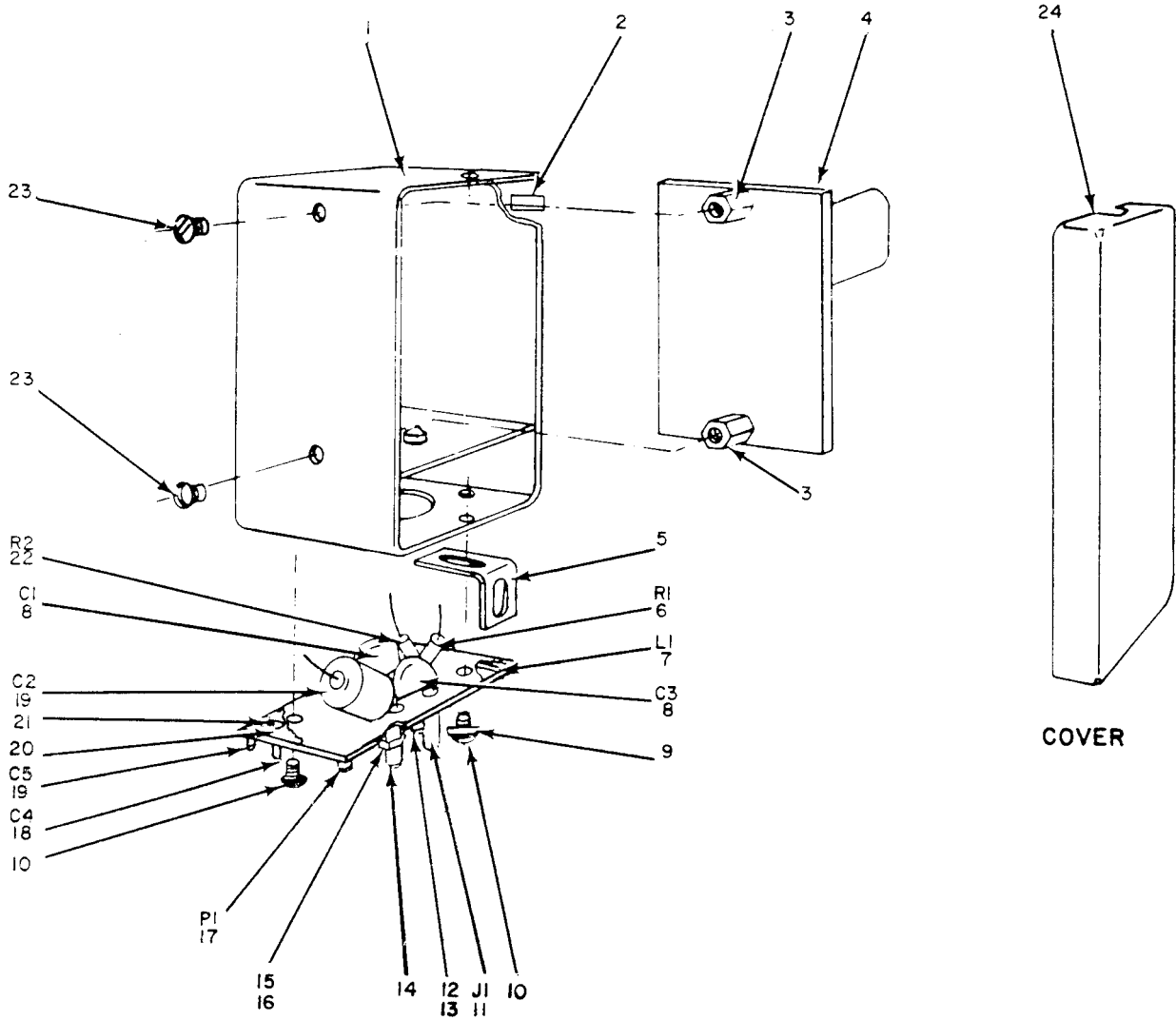
Figure 4. Amplifier Marker Assembly (A4A7) (Sheet 1 of 2).

REF. DES.	ITEM NO.	REF. DES.	ITEM NO.	REF. DES.	ITEM NO.	REF. DES.	ITEM NO.
A1	1	J304	5	R304	9	R316	9
A2	2	J305	5	R305	10	R317	10
A3	3	J306	5	R306	10	R318	10
C301	4	J307	5	R307	11	R319	11
C302	4	J308	5	R308	8	R321	8
C303	4	Q301	6	R309	9	R322	9
C304	4	Q302	6	R310	9	R323	9
C305	4	Q303	6	R311	10	R324	10
C313	4	Q304	6	R312	10	R325	10
J301	5	R301	7	R313	11	R326	11
J302	5	R302	8	R314	8	R612	12
J303	5	R303	9	R315	9		

EL6CD008

Figure 4. Amplifier Marker Assembly (A4A7) (Sheet 2 of 2),

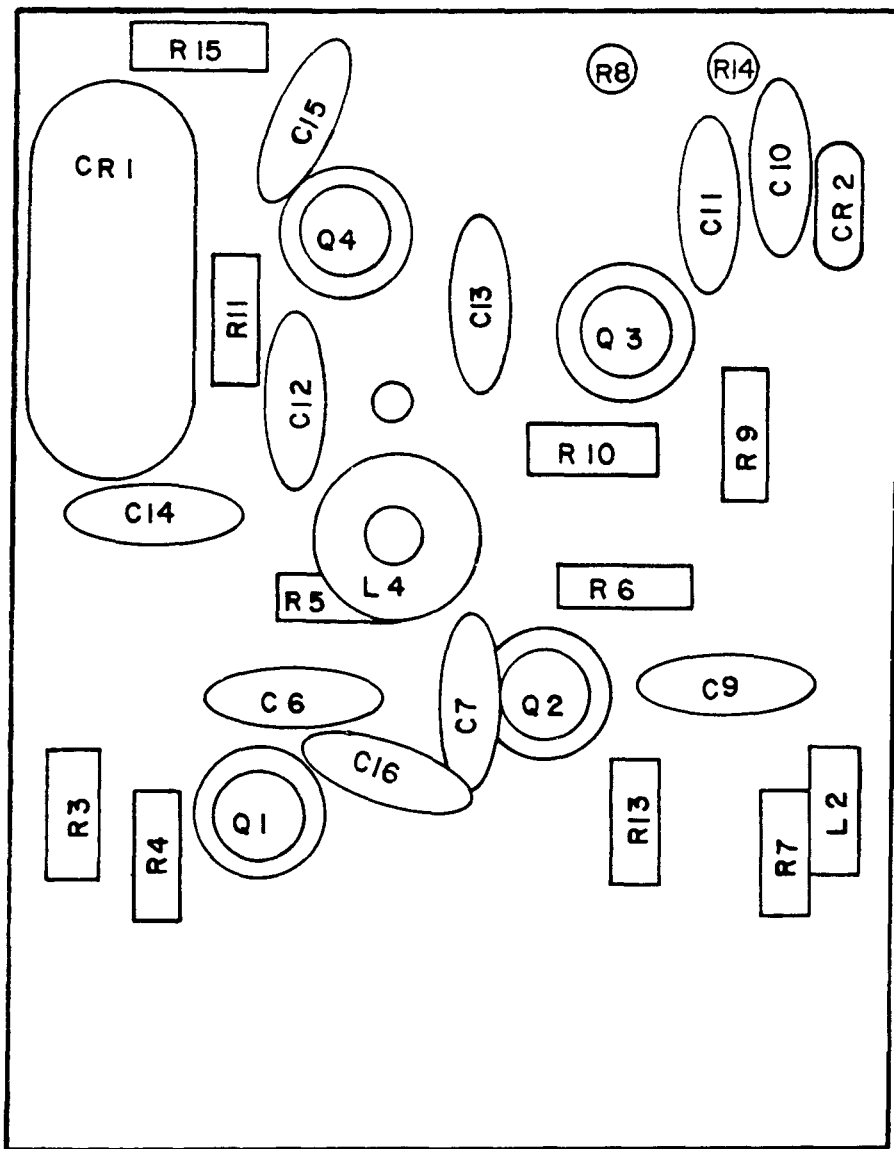
SECTION II (1) ILLUSTRATION		(2)	(3)	(4)	(5)	(6)	(7)	(8)
FIG NO	ITEM NO	SMR CODE	NATIONAL STOCK NUMBER	PART NUMBER	FSCM	DESCRIPTION	USABLE ON CODE U/M	QTY INC IN UNIT
GROUP 03 AMPLIFIER MARKER ASSEMBLY (A4A7)								
4	1	PAHDD	6625-00-106-9598	A200-015	23042	HARMONIC MARKER	EA	1
4	2	PAHDD	6625-00-115-9052	A200-011	23042	HARMONIC MARKER	EA	1
4	3	PAHDD	6625-00-001-1377	A200-010	23042	HARMONIC MARKER	EA	1
4	4	XDHZZ		TA28425	91418	CAPACITOR	EA	6
4	5	XDHZZ	5935-00-762-8517	201-41-06-243	71785	SOCKET	EA	8
4	6	PAHZZ	5961-00-103-3981	2N3644	28584	TRANSISTOR	EA	4
4	7	PAHZZ	5905-00-106-3666	RCR07G103JS	81349	RESISTOR, FIXE	EA	1
4	8	PAHZZ	5905-00-105-7765	RCR07G224JS	81349	RESISTOR, FIXE	EA	4
4	9	PAHZZ	5905-00-110-7620	RCR07G102JS	81349	RESISTOR, FIXE	EA	8
4	10	PAHZZ	5905-00-730-3285	U201SS10K0HMS	71450	RESISTOR, VARIABLE	EA	8
4	11	PAHZZ	5905-00-141-1183	RCR07G101JS	81349	RESISTOR, FIXE	EA	4
4	12	PAHZZ	5905-00-654-3910	048-109	23042	RESISTOR	EA	1
4	13	XDHZZ		12043NP	73734	SCREW	EA	19
4	14	XDHZZ		1304NP	73734	WASHER	EA	12
4	15	XDHZZ		8006NP	73734	NUT	EA	20
4	16	XDHZZ		CCN34	92219	CLAMP, CABLE	EA	1
4	17	XDHZZ		2032B	83330	TERMINAL	EA	1
4	18	XDHZZ		12046NP	73734	SCREW	EA	1
4	19	XDHZZ	5310-00-140-2146	050-015	23042	NUT	EA	2
4	20	XDHZZ		050-036	23042	WASHER	EA	1
4	21	XDHZZ		C210-010	23042	CHASSIS	EA	1
4	22	XDHZZ		1910NP	73734	TERMINAL	EA	1
4	23	XDHZZ		1950NP	73734	TERMINAL	EA	8
4	24	XDHZZ	5305-00-054-5647	MS51957-13	96906	SCREW, MACHINE	EA	3
4	25	XDHZZ		1302NP	73734	WASHER	EA	3



EL6CD009

Figure 5. 1 MHz Marker Assembly (A1).

SECTION II (1) ILLUSTRATION		(2)	(3)	(4)	(5)	(6)	(7)	(8)
FIG NO	ITEM NO	SMR CODE	NATIONAL STOCK NUMBER	PART NUMBER	FSCM	DESCRIPTION	USABLE ON CODE U/M	QTY INC IN UNIT
GROUP 0301 1 MHZ MARKER ASSEMBLY (A1)								
5	1	XDDZZ		B204-215	23042	ENCLOSURE	EA	1
5	2	XDDZZ		A058-014-01	23042	TAG,DECAL	EA	1
5	3	XDDZZ		055-007	23042	SPACER	EA	2
5	4	PAHHH	6625-00-455-6894	A204-012	23042	CIRCUIT BOARD	EA	1
5	5	XDDZZ		A209-024	23042	BRACKET, MOUNTING	EA	1
5	6	PADZZ	5905-00-106-1282	RCR20G223JS	81349	RESISTOR, FIXE	EA	1
5	7	XDDZZ		035-007	23042	INDUCTOR	EA	1
5	8	XDDZZ		FA5CGMV	01121	CAPACITOR	EA	2
5	9	XDDZZ		1302NP	73734	WASHER	EA	2
5	10	XDDZZ		12021NP	73734	SCREW	EA	2
5	11	PADZZ	5935-00-552-7660	UG625BU	80058	CONNECTOR	EA	1
5	12	XDDZZ	5310-00-638-8830	9020NP	73734	NUT	EA	1
5	13	XDDZZ		1315NP	73734	WASHER	EA	1
5	14	XDDZZ	5940-00-552-4878	MX1684U	80058	FERRULE, RADIO FREQU	EA	1
5	15	XDDZZ		050-019	23042	NUT	EA	1
5	16	XDDZZ		050-041	23042	WASHER	EA	1
5	17	PADZZ	5935-00-681-5685	UG88CU	80058	CONNECTOR	EA	1
5	18	XDDZZ		TA28425	91418	CAPACITOR	EA	1
5	19	PADZZ	5910-00-963-8069	012-034	23042	CAPACITOR	EA	2
5	20	XDDZZ		044-002	23042	PLUG	EA	1
5	21	XDDZZ		050-122	23042	SCREW	EA	4
5	22	PADZZ	5905-00-141-1116	RCR20G562JS	81349	RESISTOR, FIXE	EA	1
5	23	XDDZZ	5305-00-054-5644	MS51957-11	96906	SCREW	EA	2
5	24	XDDZZ		A212-021	23042	COVER ENCLOSURE	EA	1



EL6CDO10

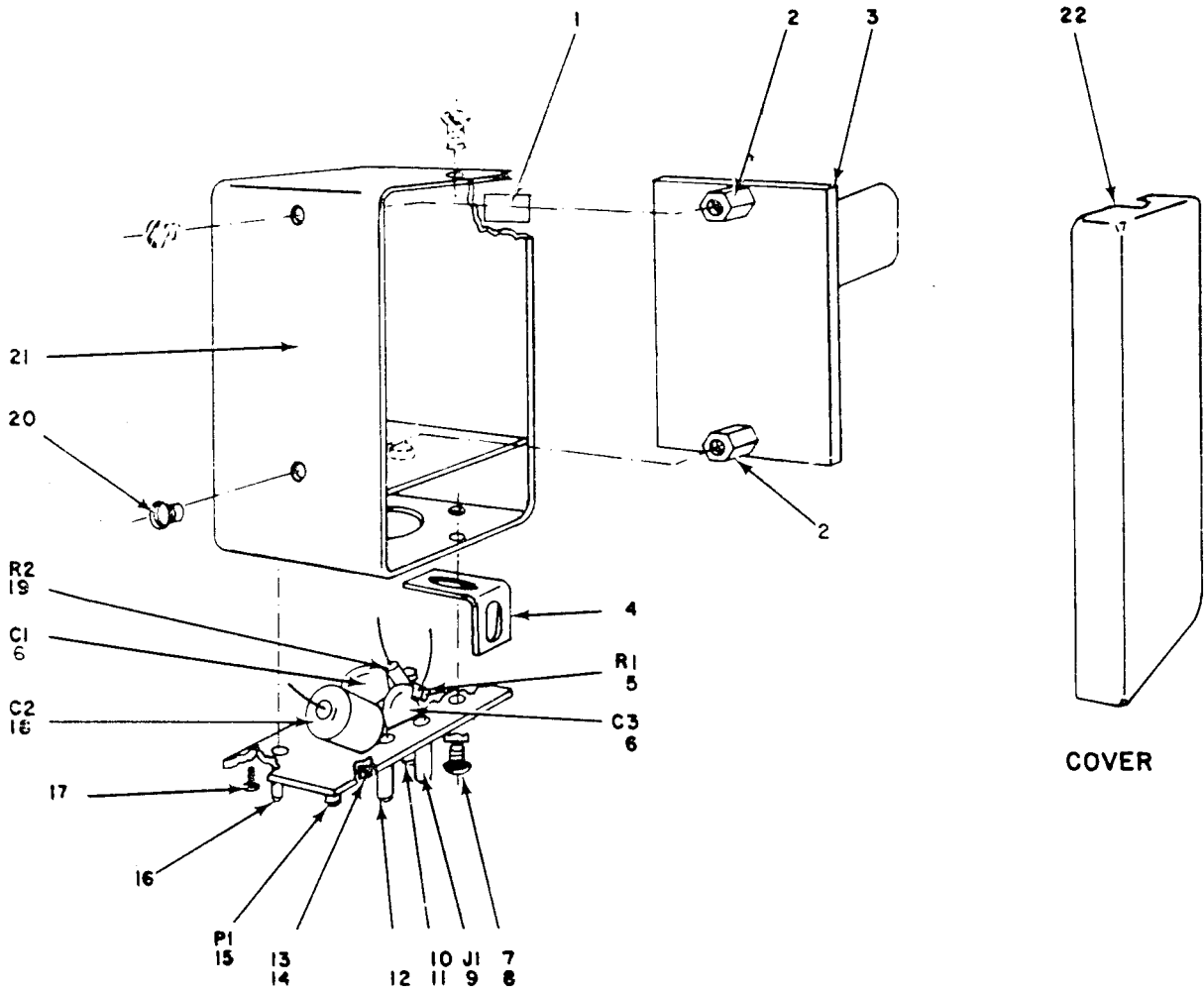
Figure 6. Circuit Board Assembly (A1A1) (Sheet 1 of 2),

REF DES.	ITEM NO.	REF DES.	ITEM NO.
C6	1	Q2	13
C7	2	Q3	13
C9	2	Q4	13
C10	3	R3	14
C11	4	R4	15
C12	2	R5	14
C13	5	R6	15
C14	6	R7	16
C15	7	R8	17
C16	2	R9	14
CR1	8	R10	15
CR2	9	R11	18
L2	10	R13	19
L4	11	R14	16
Q1	12	R15	19

EL6CD011

Figure 6. Circuit Board Assembly (A1A1) (Sheet 2 of 2).

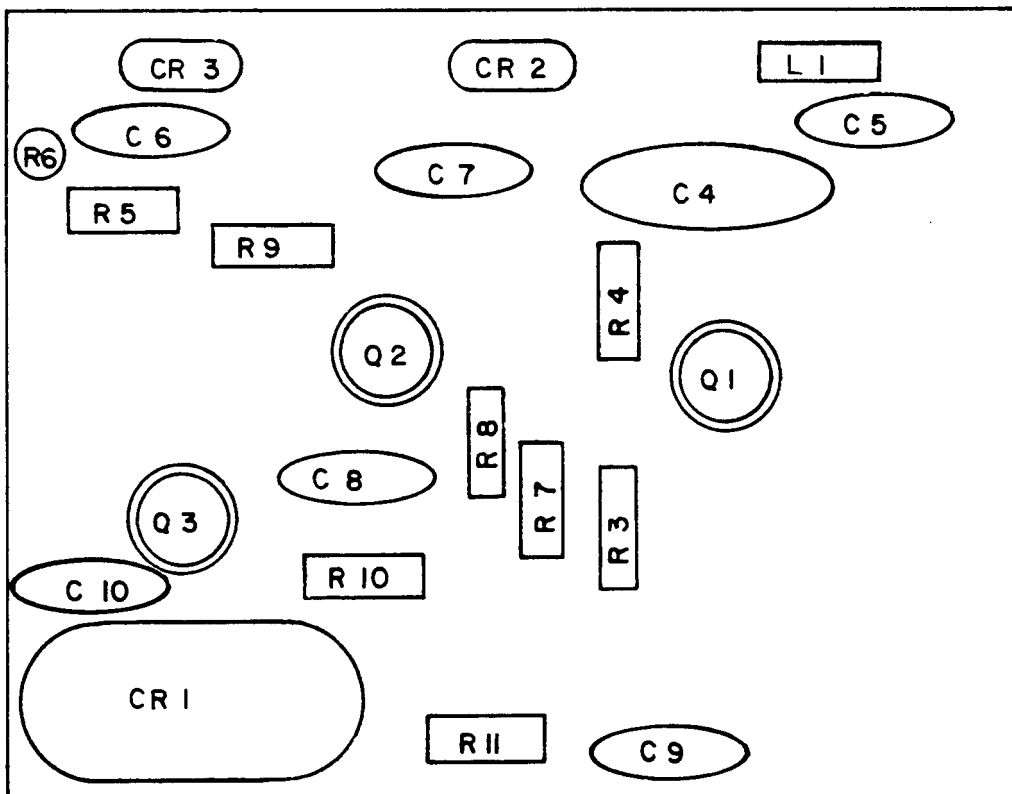
SECTION II (1) ILLUSTRATION		(2)	(3)	(4)	(5)	(6)	(7)	(8)
FIG NO	ITEM NO	SMR CODE	NATIONAL STOCK NUMBER	PART NUMBER	FSCM	DESCRIPTION	USABLE ON CODE U/M	QTY INC IN UNIT
GROUP 030101 CIRCUIT BOARD ASSEMBLY (A1A1)								
6	1	XDHZZ		TA28425	91418	CAPACITOR	EA	1
6	2	XDHZZ		SMGMV24161	91418	CAPACITOR	EA	4
6	3	PAHZZ	5910-00-858-8698	012-010	23042	CAPACITOR	EA	1
6	4	PAHZZ	5910-00-989-4367	012-007	23042	CAPACITOR	EA	1
6	5	PAHZZ	5910-00-858-8700	012-043	23042	CAPACITOR	EA	1
6	6	PAHZZ	5910-00-094-6456	012-012	23042	CAPACITOR	EA	1
6	7	XDHZZ		012-144	23042	CAPACITOR	EA	1
6	8	XDHZZ		023-023	23042	CRYSTAL	EA	1
6	9	PAHZZ	5961-00-683-4777	1N82AG	28107	SEMICONDUCTOR DEVIC	EA	1
6	10	XDHZZ		4426-6K	82142	INDUCTOR	EA	1
6	11	XDHZZ		035-007	23042	INDUCTOR	EA	1
6	12	PAHZZ	5961-00-930-5325	2N3565	28584	TRANSISTOR	EA	1
6	13	PAHZZ	5961-00-898-1213	2N3564	04713	TRANSISTOR	EA	3
6	14	PAHZZ	5905-00-116-8556	RCR07G223JS	81349	RESISTOR, FIXE	EA	3
6	15	PAHZZ	5905-00-105-7767	RCR07G474JS	81349	RESISTOR, FIXE	EA	3
6	16	PAHZZ	5905-00-119-8812	RCR07G121JS	81349	RESISTOR, FIXE	EA	2
6	17	PAHZZ	5905-00-106-3667	RCR07G120JS	81349	RESISTOR, FIXE	EA	1
6	18	PAHZZ	5905-00-105-7765	RCR07G224JS	81349	RESISTOR, FIXE	EA	1
6	19	PAHZZ	5905-00-115-3560	RCR07G183JS	81349	RESISTOR, FIXE	EA	2



EL6CD012

Figure 7. 10 MHz Marker Assembly (A2).

SECTION II (1) ILLUSTRATION		(2)	(3)	(4)	(5)	(6)	(7)	(8)
FIG NO	ITEM NO	SMR CODE	NATIONAL STOCK NUMBER	PART NUMBER	FSCM	DESCRIPTION	USABLE ON CODE U/M	QTY INC IN UNIT
GROUP 0302 10 MHZ MARKER ASSEMBLY (A2)								
7	1	XDDZZ		A058-014-03	23042	TAG,DECAL	EA	1
7	2	XDDZZ		055-007	23042	SPACER	EA	2
7	3	PAHDD	6625-00-455-6883	A204-010	23042	CIRCUIT CARD	EA	1
7	4	XDDZZ		A209-024	23042	BRACKET,MOUNTING	EA	1
7	5	PADZZ	5905-00-106-1282	RCR20G223JS	81349	RESISTOR, FIXE	EA	1
7	6	XDDZZ		FA5CGMV	01121	CAPACITOR	EA	2
7	7	XDDZZ		12021NP	73734	SCREW	EA	2
7	8	XDDZZ		1302NP	73734	WASHER	EA	2
7	9	PADZZ	5935-00-552-7660	UG625BU	80058	CONNECTOR	EA	1
7	10	XDDZZ		1315NP	73734	WASHER	EA	1
7	11	XDDZZ	5310-00-638-8830	9020NP	73734	NUT	EA	1
7	12	XDDZZ	5940-00-552-4878	MX1684U	80058	FERRULE,RADIO FREQ	EA	1
7	13	XDDZZ		050-041	23042	WASHER	EA	1
7	14	XDDZZ		050-019	23042	NUT	EA	1
7	15	PADZZ	5935-00-681-5685	UG88CU	80058	CONNECTOR	EA	1
7	16	XDDZZ		044-002	23042	PLUG	EA	1
7	17	XDDZZ		050-122	23042	SCREW	EA	4
7	18	XDDZZ		Z5UR1	91418	CAPACITOR	EA	1
7	19	PADZZ	5905-00-141-1165	RCR20G682JS	81349	RESISTOR, FIXED, COMP	EA	1
7	20	XDDZZ	5305-00-054-5644	MS51957-11	96906	SCREW	EA	2
7	21	XDDZZ		B204-215	23042	ENCLOSURE	EA	1
7	22	XDDZZ		A212-021	23042	COVER, ENCLOSURE	EA	1



EL6CD 013

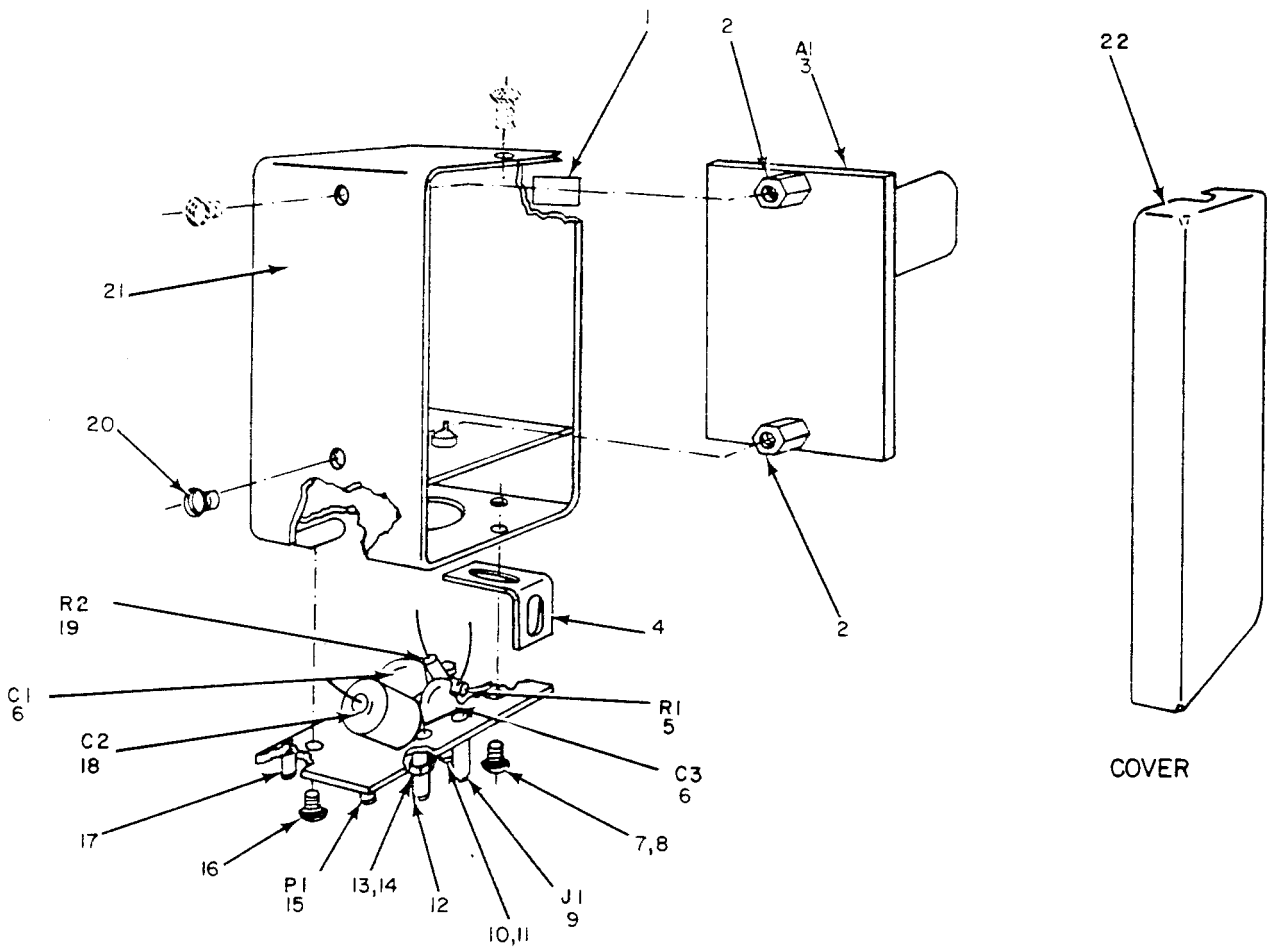
Figure 8. Circuit Board Assembly (A2A1) (Sheet 1 of 2).

REF. DES.	ITEM NO.	REF. DES.	ITEM NO.
C4	1	Q2	10
C5	2	Q3	10
C6	3	R3	11
C7	4	R4	12
C8	5	R5	13
C9	4	R6	13
C10	2	R7	14
CR1	6	R8	15
CR2	7	R9	16
CR3	7	R10	16
L1	8	R11	12
Q1	9		

EL6CDO14

Figure 8. Circuit Board Assembly (A2A1) (Sheet 2 of 2).

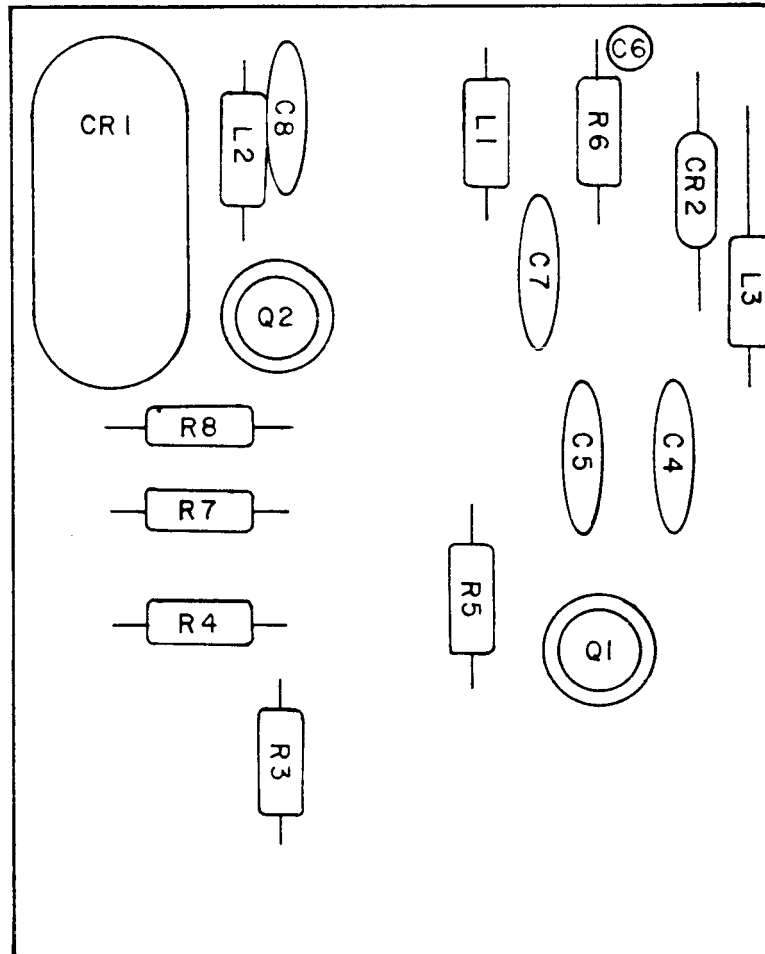
SECTION II (1) ILLUSTRATION		(2)	(3)	(4)	(5)	(6)	(7)	(8)
FIG NO	ITEM NO	SMR CODE	NATIONAL STOCK NUMBER	PART NUMBER	FSCM	DESCRIPTION	USABLE ON CODE U/M	QTY INC IN UNIT
GROUP 03021 CIRCUIT BOARD ASSEMBLY (A2A1)								
8	1	XDHZZ		Z5UR1	91418	CAPACITOR	EA	1
8	2	XDHZZ		012-013	23042	CAPACITOR	EA	2
8	3	PAHZZ	5910-00-858-8698	012-010	23042	CAPACITOR	EA	1
8	4	XDHZZ		012-011	23042	CAPACITOR	EA	2
8	5	PAHZZ	5910-00-094-6456	012-012	23042	CAPACITOR	EA	1
8	6	XDHZZ		023-024	23042	CRYSTAL	EA	1
8	7	PAHZZ	5961-00-683-4777	1N82AG	28107	SEMICONDUCTOR DEVIC	EA	2
8	8	XDHZZ		4426-6K	82142	INDUCTOR	EA	1
8	9	PAHZZ	5961-00-905-9394	2N3567	04713	TRANSISTOR	EA	1
8	10	PAHZZ	5961-00-898-1213	2N3564	04713	TRANSISTOR	EA	2
8	11	PAHZZ	5905-00-106-3666	RCR07G103JS	81349	RESISTOR, FIXE	EA	1
8	12	PAHZZ	5905-00-110-0388	RCR07G104JS	81349	RESISTOR, FIXE	EA	2
8	13	PAHZZ	5905-00-119-8812	RCR07G121JS	81349	RESISTOR, FIXE	EA	2
8	14	PAHZZ	5905-00-106-1278	RCR07G123JS	81349	RESISTOR, FIXE	EA	1
8	15	PAHZZ	5905-00-105-7765	RCR07G224JS	81349	RESISTOR, FIXE	EA	1
8	16	PAHZZ	5905-00-116-8556	RCR07G223JS	81349	RESISTOR, FIXE	EA	2



EL6CD015

Figure 9. 50 MHz Marker Assembly (A3).

SECTION II (1) ILLUSTRATION		(2)	(3)	(4)	(5)	(6)	(7)	(8)
FIG NO	ITEM NO	SMR CODE	NATIONAL STOCK NUMBER	PART NUMBER	FSCM	DESCRIPTION	USABLE ON CODE U/M	QTY INC IN UNIT
GROUP 0303 50 MHZ MARKER ASSEMBLY (A3)								
9	1	XDDZZ		A058-014-04	23042	TAG,DECAL	EA	1
9	2	XDDZZ		055-007	23042	SPACER	EA	2
9	3	PAHHH	6625-00-115-9053	A204-007	23042	CIRCUIT CARD	EA	1
9	4	XDDZZ		A209-024	23042	BRACKET,MOUNTING	EA	1
9	5	PADZZ	5905-00-141-0596	RCR20G473JS	81349	RESISTOR, FIXE	EA	1
9	6	XDDZZ		FA5CGMV	01121	CAPACITOR	EA	2
9	7	XDDZZ		12021NP	73734	SCREW	EA	2
9	8	XDDZZ		1302NP	73734	WASHER	EA	2
9	9	PADZZ	5935-00-552-7660	UG625BU	80058	CONNECTOR	EA	1
9	10	XDDZZ	5310-00-638-8830	9020NP	73734	NUT	EA	1
9	11	XDDZZ		1315NP	73734	WASHER	EA	1
9	12	XDDZZ	5940-00-552-4878	MX1684U	80058	CONNECTOR	EA	1
9	13	XDDZZ		050-019	23042	NUT	EA	1
9	14	XDDZZ		050-041	23042	WASHER	EA	1
9	15	PADZZ	5935-00-681-5685	UG88CU	80058	CONNECTOR	EA	1
9	16	XDDZZ		050-122	23042	SCREW	EA	4
9	17	XDDZZ		044-002	23042	PLUG	EA	1
9	18	XDDZZ		Z5UR1	91418	CAPACITOR	EA	1
9	19	PADZZ	5905-00-141-1165	RCR20G682JS	81349	RESISTOR, FIXED, COMP	EA	1
9	20	XDDZZ	5305-00-054-5644	MS51957-11	96906	SCREW	EA	2
9	21	XDDZZ		B204-215	23042	ENCLOSURE	EA	1
9	22	XDDZZ		A212-021	23042	COVER, ENCLOSURE	EA	1



EL6CD016

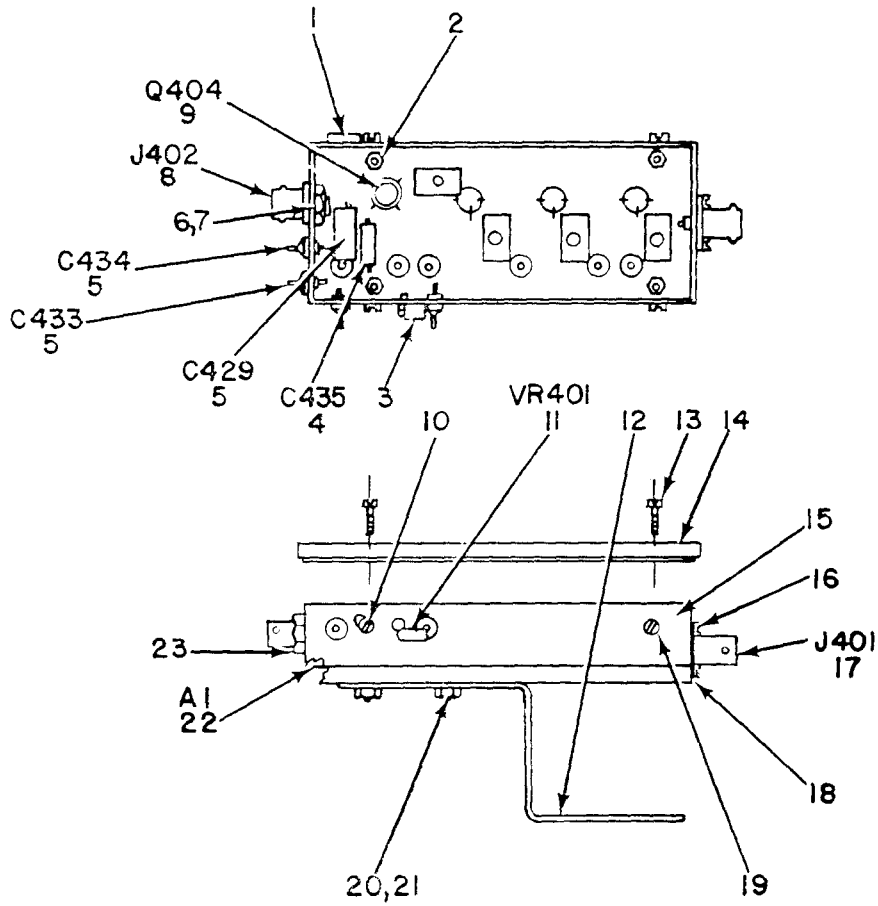
Figure 10. Circuit Board Assembly (A3A1) (Sheet 1 of 2).

REF. DES.	ITEM NO.
C 4	1
C 5	2
C 6	3
C 7	2
C 8	4
CR 1	5
CR 2	6
L 1	7
L 2	8
L 3	9
Q 1	10
Q 2	11
R 3	12
R 4	13
R 5	14
R 6	15
R 7	16
R 8	17

EL6CD017

Figure 10. Circuit Board Assembly (A3A1) (Sheet 2 of 2).

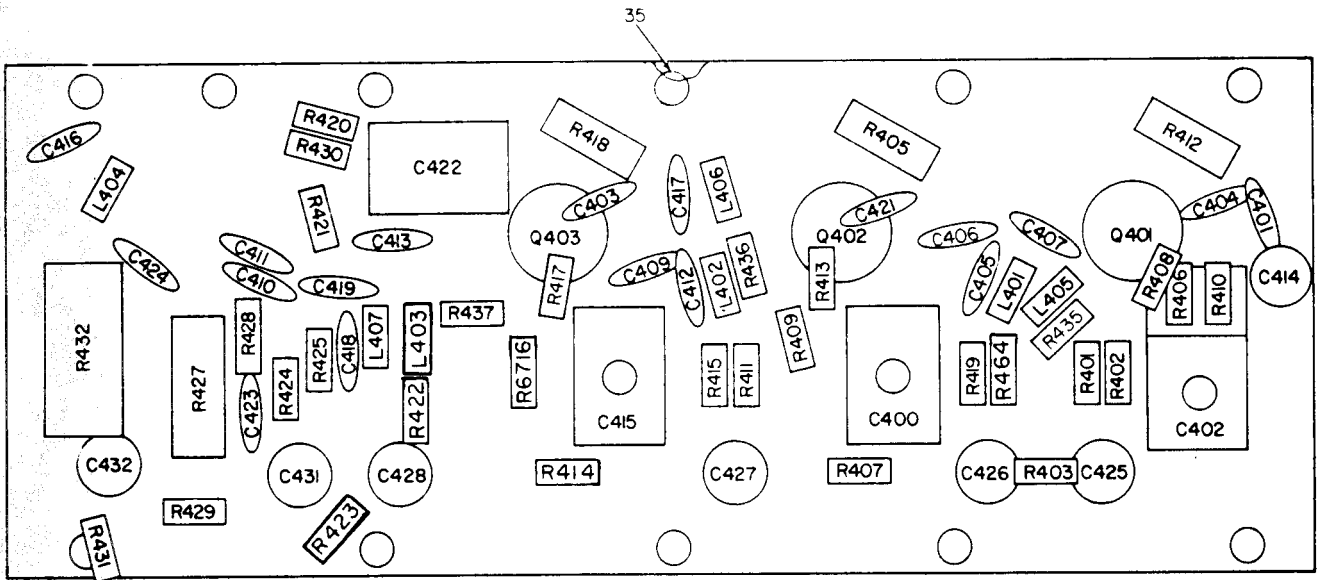
SECTION II (1) ILLUSTRATION		(2)	(3)	(4)	(5)	(6)	(7)	(8)
FIG NO	ITEM NO	SMR CODE	NATIONAL STOCK NUMBER	PART NUMBER	FSCM	DESCRIPTION	USABLE ON CODE U/M	QTY INC IN UNIT
GROUP 030301 CIRCUIT BOARD ASSEMBLY (A3A1)								
10	1	PAHZZ	5910-00-989-4367	012-007	23042	CAPACITOR	EA	1
10	2	XDHZZ		SMGMV24161	91418	CAPACITOR	EA	2
10	3	XDHZZ		C80-51	95121	CAPACITOR	EA	1
10	4	PAHZZ	5910-00-493-6510	012-008	23042	CAPACITOR	EA	1
10	5	PAHZZ	5955-00-100-1135	023-025	23042	CRYSTAL	EA	1
10	6	PAHZZ	5961-00-683-4777	1N82AG	28107	SEMICONDUCTOR DEVIC	EA	1
10	7	XDHZZ		4426-6K	82142	INDUCTOR	EA	1
10	8	XDHZZ		4436-4K	82142	INDUCTOR	EA	1
10	9	XDHZZ		035-019	23042	INDUCTOR	EA	1
10	10	PAHZZ	5961-00-905-9394	2N3567	04713	TRANSISTOR	EA	1
10	11	PAHZZ	5961-00-898-1213	2N3564	04713	TRANSISTOR	EA	1
10	12	PAHZZ	5905-00-110-7620	RCR07G102JS	81349	RESISTOR FIXED	EA	1
10	13	PAHZZ	5905-00-141-0717	RC09G473JS	81349	RESISTOR, FIXE	EA	1
10	14	PAHZZ	5905-00-252-1671	RCR07G225JS	81349	RESISTOR, FIXE	EA	1
10	15	PAHZZ	5905-00-135-3973	RCR07G221JS	81349	RESISTOR, FIXE	EA	1
10	16	PAHZZ	5905-00-106-3666	RCR07G103JS	81349	RESISTOR, FIXE	EA	1
10	17	PAHZZ	5905-00-105-7765	RCR07G224JS	81349	RESISTOR, FIXE	EA	1



EL6CD018

Figure 11. Video Amplifier (A4A2).

SECTION II (1) ILLUSTRATION		(2)	(3)	(4)	(5)	(6)	(7)	(8)
FIG NO	ITEM NO	SMR CODE	NATIONAL STOCK NUMBER	PART NUMBER	FSCM	DESCRIPTION	USABLE ON CODE U/M	QTY INC IN UNIT
GROUP 04 VIDEO AMPLIFIER (A4A2)								
11	1	PADZZ	5340-00-816-3422	1711C	72653	PLUG BUTTON	EA	1
11	2	XDDZZ		8009NP	73734	NUT	EA	1
11	3	XDDZZ		059-032	23042	TERMINAL	EA	1
11	4	PADZZ	5910-00-494-9022	FA5C	01121	CAPACITOR	EA	1
11	5	XDDZZ		FA5CGMV	01121	CAPACITOR	EA	3
11	6	XDDZZ	5310-00-638-8830	9020NP	73734	NUT	EA	1
11	7	XDDZZ		1315NP	73734	WASHER	EA	1
11	8	PADZZ	5935-00-552-7660	UG625BU	80058	CONNECTOR	EA	1
11	9	PADZZ	5961-00-998-9314	2N4429	01281	TRANSISTOR	EA	1
11	10	XDDZZ		059-019	23042	GROUND, LUG	EA	1
11	11	XDDZZ		1ZS10A	75042	DIODE	EA	1
11	12	XDDZZ		B209-089	23042	BRACKET, MOUNTING	EA	1
11	13	XDDZZ		12023NP	73734	SCREW	EA	4
11	14	XDDZZ		A055-006	23042	SPACER, COVER	EA	4
11	15	XDDZZ		C212-156-01	23042	ENCLOSURE	EA	1
11	16	XDDZZ		12021NP	73734	SCREW	EA	4
11	17	PADZZ	5935-00-838-8470	UG185U	81349	CONNECTOR, RECEPTACL	EA	1
11	18	XDDZZ		B211-042	23042	COVER	EA	1
11	19	XDDZZ	5305-00-054-5649	MS51957-15	96906	SCREW	EA	4
11	20	XDDZZ		8006NP	73734	NUT	EA	2
11	21	XDDZZ	5310-00-011-1041	MS35338-79	96906	WASHER	EA	2
11	22	XDHHH		A204-439	23042	CIRCUIT CARD	EA	1
11	23	XDDZZ		050-122	23042	SCREW	EA	9



EL6CD019

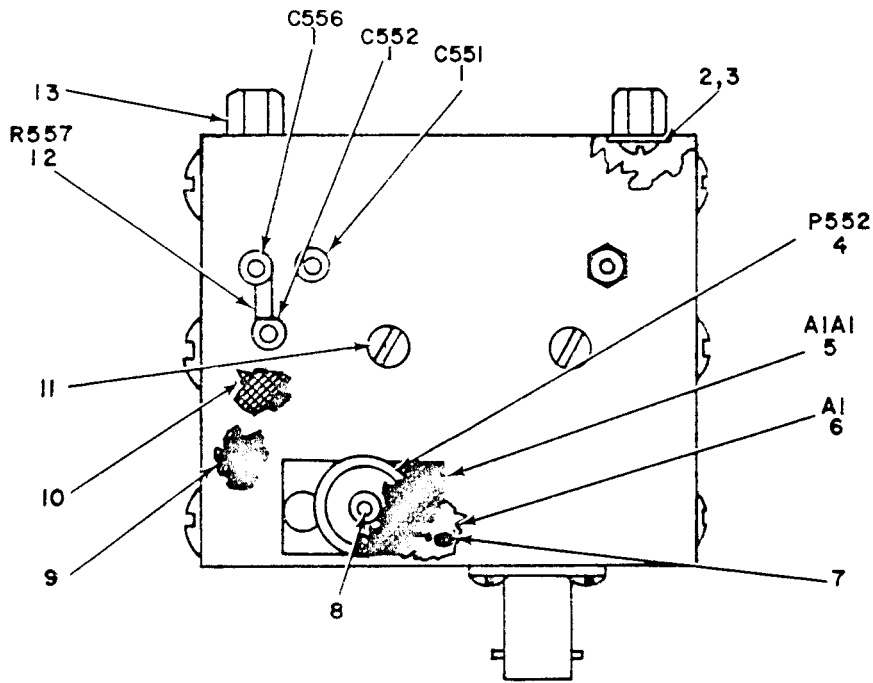
Figure 12. Circuit Board Assembly (A4A2A1) (Sheet 1 of 2).

REF. DES.	ITEM NO.	REF. DES.	ITEM NO.	REF. DES.	ITEM NO.	REF. DES.	ITEM NO.
C400	1	C421	11	Q403	15	R419	27
C401	1	C422	1	R401	16	R420	21
C402	2	C423	9	R402	17	R421	28
C403	3	C424	4	R403	18	R422	29
C404	4	C425	12	R404	19	R423	28
C405	3	C426	12	R405	20	R424	30
C406	5	C427	12	R406	21	R425	31
C407	4	C428	12	R407	18	R427	32
C409	2	C431	12	R408	22	R428	28
C410	2	C432	12	R409	23	R429	22
C411	6	L401	13	R410	21	R430	21
C412	3	L402	13	R411	24	R431	28
C413	7	L403	13	R412	24	R432	33
C414	8	L404	13	R413	22	R435	24
C415	1	L405	14	R414	18	R436	34
C416	9	L406	14	R415	25	R437	34
C417	10	L407	14	R416	19		
C418	2	Q401	15	R417	22		
C419	3	Q402	15	R418	26		

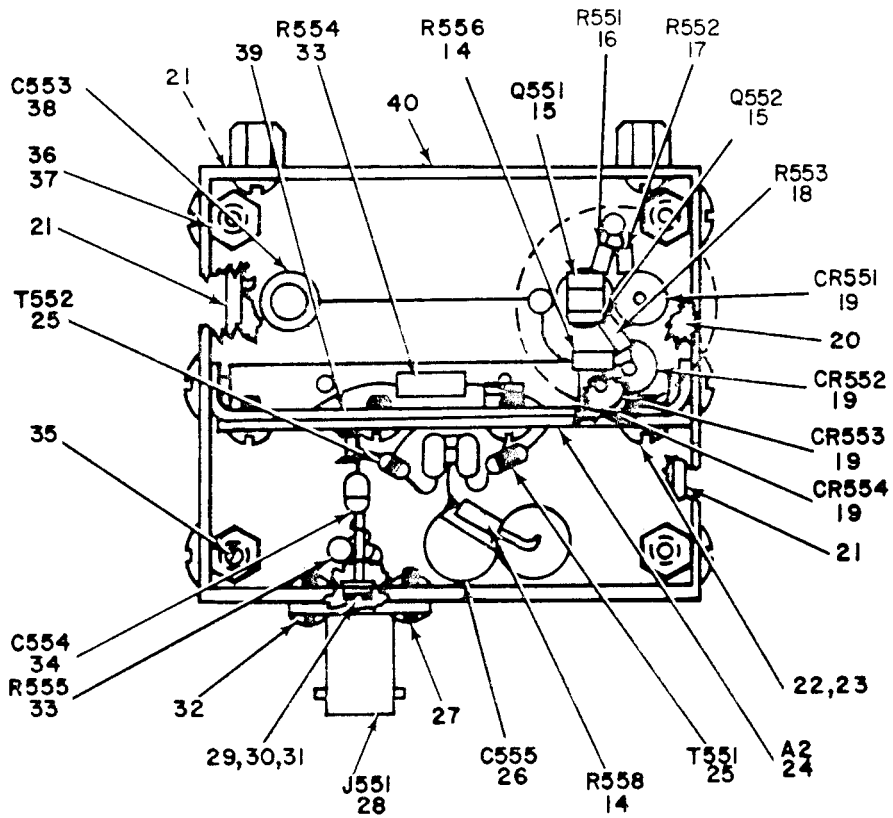
EL6CD020

Figure 12. Circuit Card Assembly (A4A2A1) (Sheet 2 of 2).

SECTION II (1) ILLUSTRATION		(2)	(3)	(4)	(5)	(6)	(7)	(8)
(A) FIG NO	(B) ITEM NO	SMR CODE	NATIONAL STOCK NUMBER	PART NUMBER	FSCM	DESCRIPTION	USABLE ON CODE U/M	QTY INC IN UNIT
GROUP 0401 CIRCUIT BOARD ASSEMBLY (A4A2A1)								
12	1	PAHZZ	5910-00-834-3660	404-8-60PF	84171	CAPACITOR, VARIABLE	EA	4
12	2	XDHZZ		B37860	91418	CAPACITOR	EA	4
12	3	XDHZZ		TA28425	91418	CAPACITOR	EA	4
12	4	XDHZZ		SMGMV24161	91418	CAPACITOR	EA	3
12	5	PAHZZ	5910-00-880-4289	012-092	23042	CAPACITOR	EA	1
12	6	XDHZZ		NP028422	91418	CAPACITOR	EA	1
12	7	PAHZZ	5910-00-542-2010	012-050	23042	CAPACITOR	EA	1
12	8	PAHZZ	5910-00-520-2736	012-256	23042	CAPACITOR	EA	1
12	9	XDHZZ		TA24168	91418	CAPACITOR	EA	2
12	10	PAHZZ	5910-00-858-8700	012-043	23042	CAPACITOR	EA	1
12	11	PAHZZ	5910-00-074-1893	012-085	23042	CAPACITOR	EA	1
12	12	XDHZZ		FA5CGMV	01121	CAPACITOR	EA	6
12	13	XDHZZ		A035-029	23042	INDUCTOR	EA	4
12	14	XDHZZ		035-024	23042	INDUCTOR	EA	3
12	15	PAHZZ	5961-00-252-1331	2N5109	95303	TRANSISTOR	EA	3
12	16	PAHZZ	5905-00-110-7620	RCR07G102JS	81349	RESISTOR, FIXE	EA	1
12	17	PAHZZ	5905-00-110-7622	RCR07G682JS	81349	RESISTOR, FIXE	EA	1
12	18	PAHZZ	5905-00-141-1183	RCR07G101JS	81349	RESISTOR, FIXE	EA	3
12	19	PAHZZ	5905-00-135-6046	RCR07G681JS	81349	RESISTOR, FIXE	EA	2
12	20	PAHZZ	5905-00-141-1118	RCR20G390JS	81349	RESISTOR, FIXE	EA	1
12	21	PAHZZ	5905-00-246-9393	RCR07G4R7JS	81349	RESISTOR, FIXE	EA	4
12	22	PAHZZ	5905-00-106-3668	RCR07G220JS	81349	RESISTOR, FIXE	EA	4
12	23	PAHZZ	5905-00-105-7768	RCR07G561JS	81349	RESISTOR, FIXE	EA	1
12	24	PAHZZ	5905-00-135-3973	RCR07G221JS	81349	RESISTOR, FIXE	EA	3
12	25	PAHZZ	5905-00-114-0711	RCR07G472JS	81349	RESISTOR, FIXE	EA	1
12	26	PAHZZ	5905-00-114-5388	RCR20G220JS	81349	RESISTOR, FIXE	EA	1
12	27	PAHZZ	5905-00-141-0743	RCR07G392JS	81349	RESISTOR, FIXE	EA	1
12	28	PAHZZ	5905-00-107-0656	RCR07G100JS	81349	RESISTOR, FIXE	EA	4
12	29	PAHZZ	5905-00-114-5438	RCR20G510JS	81349	RESISTOR, FIXE	EA	1
12	30	PAHZZ	5905-00-106-3666	RCR07G103JS	81349	RESISTOR, FIXE	EA	1
12	31	PAHZZ	5905-00-141-1132	RCR07G752JS	81349	RESISTOR, FIXE	EA	1
12	32	PAHZZ	5905-00-247-8722	RCR32G271JS	81349	RESISTOR, FIXE	EA	1
12	33	PAHZZ	5905-00-279-1933	RCR42GF221J	81349	RESISTOR, FIXE	EA	1
12	34	PAHZZ	5905-00-114-0710	RCR07G331JS	81349	RESISTOR, FIXE	EA	2
12	35	XDHZZ	5940-00-280-0601	2022C	83330	TERMINAL, TURRET	EA	1



SIDE VIEW



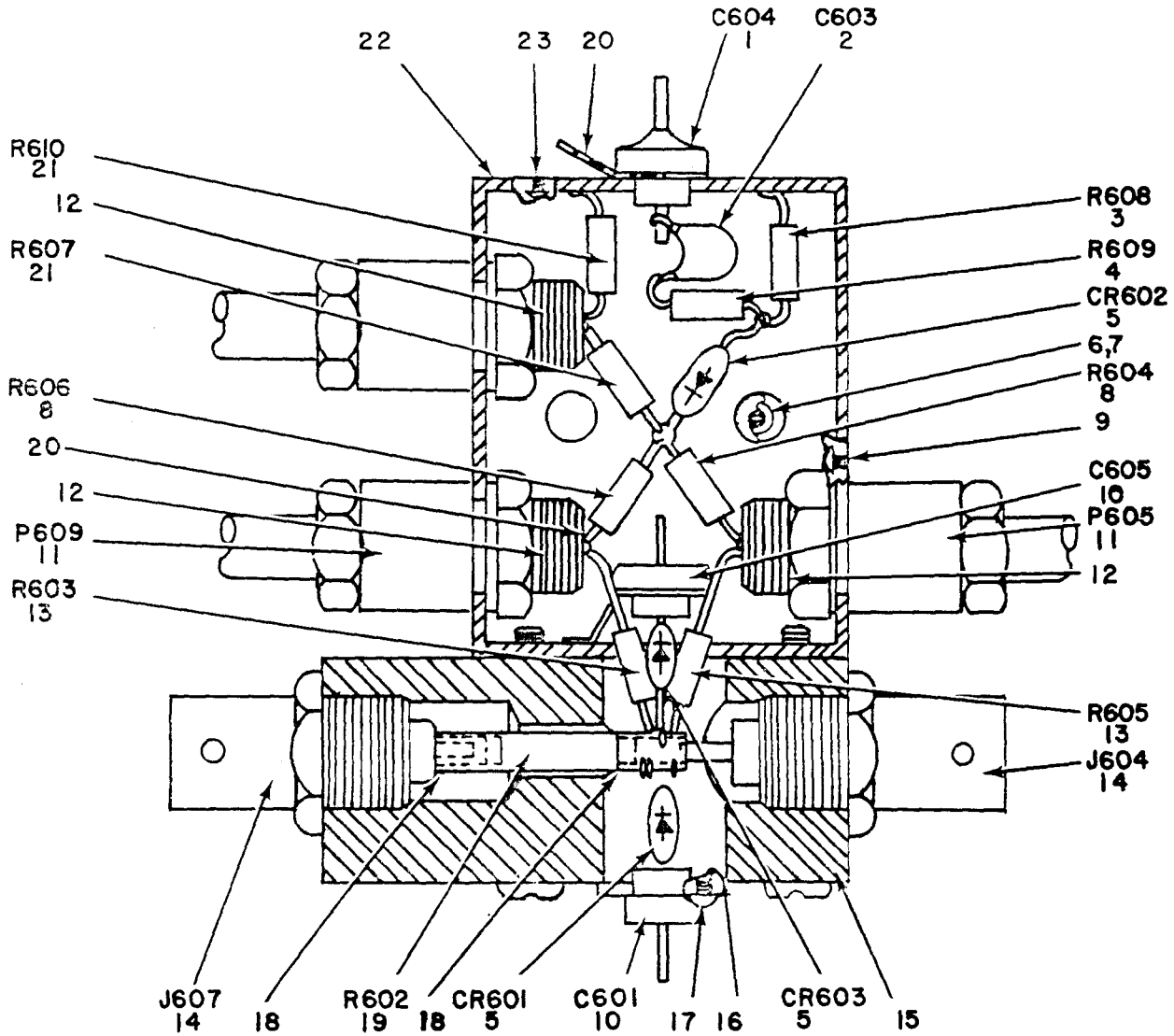
INTERNAL VIEW

EL6CD021

Figure 13. Fixed Oscillator (A4A3).

SECTION II (1) ILLUSTRATION		(2)	(3)	(4)	(5)	(6)	(7)	(8)
FIG NO	ITEM NO	SMR CODE	NATIONAL STOCK NUMBER	PART NUMBER	FSCM	DESCRIPTION	USABLE ON CODE U/M	QTY INC IN UNIT
						GROUP 05 FIXED OSCILLATOR (A4A3)		
13	1	XDHZZ		FA5CGMV	01121	CAPACITOR	EA	3
13	2	XDHZZ		12041NP	73734	SCREW	EA	2
13	3	XDHZZ		1304NP	73734	WASHER	EA	2
13	4	XDHZZ		A020-138	23042	CONNECTOR	EA	1
13	5	XDHZZ		A204-059	23042	FILTER ASSEMBLY	EA	1
13	6	PAHZZ	5915-00-763-7767	A204-214	23042	FILTER, LOW PASS	EA	1
13	7	XDHZZ		A223-030-01	23042	SHIELD, FILTER	EA	1
13	8	XDHZZ		22-0-0H1021	98053	CONDUCTOR, FILTER	EA	2
13	9	XDHZZ		A212-077	23042	ENCLOSURE, FILTER	EA	1
13	10	XDHZZ		B212-051	23042	ENCLOSURE	EA	1
13	11	XDHZZ		056-004	23042	SPRING, CAP	EA	5
13	12	PAHZZ	5905-00-141-0595	RCR20G472JS	81349	RESISTOR, FIXED, COMP	EA	1
13	13	XDHZZ		055-013	23042	SPACER	EA	2
13	14	PAHZZ	5905-00-106-1249	RCR07G510JS	81349	RESISTOR, FIXE	EA	2
13	15	PAHZZ	5961-00-938-1089	SE3002	28584	TRANSISTOR	EA	2
13	16	PAHZZ	5905-00-119-3503	RCR07G271JS	81349	RESISTOR, FIXE	EA	1
13	17	PAHZZ	5905-00-126-6683	RCR07G332JS	81349	RESISTOR, FIXE	EA	1
13	18	PAHZZ	5905-00-106-3666	RCR07G103JS	81349	RESISTOR, FIXE	EA	1
13	19	PAHZZ	5961-00-683-4777	1N82AG	28107	SEMICONDUCTOR DEVIC	EA	4
13	20	XDHZZ		A211-011	23042	COVER	EA	1
13	21	XDHZZ	5940-00-280-0601	2022C	83330	TERMINAL, TURRET	EA	3
13	22	XDHZZ		12021NP	73734	SCREW	EA	6
13	23	XDHZZ		1302NP	73734	WASHER	EA	6
13	24	XDHZZ	6625-00-106-9602	A204-695	23042	CIRCUIT BOARD	EA	1
13	25	PAHZZ	5950-00-760-0104	A061-033	23042	TRANSFORMER	EA	2
13	26	PAHZZ	5910-00-094-6456	012-012	23042	CAPACITOR	EA	1
13	27	XDHZZ		12020NP	73734	SCREW	EA	13
13	28	PAHZZ	5935-00-838-8470	UG185U	81349	CONNECTOR, RECEPTCL	EA	1
13	29	XDHZZ		38100	73734	TERMINAL	EA	1
13	30	XDHZZ		050-025	23042	WASHER	EA	2
13	31	XDHZZ		8003NP	73734	NUT	EA	1
13	32	XDHZZ	5305-00-054-5647	MS51957-13	96906	SCREW, MACHINE	EA	1
13	33	PAHZZ	5905-00-114-5438	RCR20G510JS	81349	RESISTOR, FIXE	EA	2
13	34	PAHZZ	5910-00-577-6998	012-035	23042	CAPACITOR	EA	1
13	35	XDHZZ	5305-00-054-5649	MS51957-15	96906	SCREW	EA	4
13	36	XDHZZ		A055-006	23042	SPACER, COVER	EA	4
13	37	XDHZZ		12023NP	73734	SCREW	EA	4
13	38	PAHZZ	5910-00-924-7055	VC22GY	82142	CAPACITOR, VARIABLE	EA	1
13	39	XDHZZ		A219-018	23042	PLATE, MOUNTING	EA	1

SECTION II									
(1)	(2)	(3)	(4)	(5)	(6)	(7)	(8)		
ILLUSTRATION					DESCRIPTION		QTY		
(A)	(B)	NATIONAL					INC		
FIG	ITEM	SMR	STOCK	PART			IN		
NO	NO	CODE	NUMBER	NUMBER	FSCM	USABLE ON CODE	U/M	UNIT	
13	40	XDZZ		A210-079	23042	CHASSIS		EA	1



EL6CD022

Figure 14. Monitor Mixer (A4A5).

SECTION II (1) ILLUSTRATION		(2)	(3)	(4)	(5)	(6)	(7)	(8)
FIG NO	ITEM NO	SMR CODE	NATIONAL STOCK NUMBER	PART NUMBER	FSCM	DESCRIPTION	USABLE ON CODE U/M	QTY INC IN UNIT
GROUP 06 MONITOR MIXER, (A4A5)								
14	1	XDHZZ		FA5CGMV	01121	CAPACITOR	EA	1
14	2	XDHZZ		SMGMV24161	91418	CAPACITOR	EA	1
14	3	PAHZZ	5905-00-106-3666	RCR07G103JS	81349	RESISTOR, FIXE	EA	1
14	4	PAHZZ	5905-00-135-3973	RCR07G221JS	81349	RESISTOR, FIXE	EA	1
14	5	PAHZZ	5961-00-938-7645	HD5003	73293	DIODE	EA	3
14	6	XDHZZ	5305-00-054-5644	MS51957-11	96906	SCREW	EA	2
14	7	XDHZZ		050-022	23042	WASHER	EA	2
14	8	PAHZZ	5905-00-111-4727	RCR07G272JS	81349	RESISTOR, FIXE	EA	2
14	9	XDHZZ		A211-007	23042	COVER, ENCLOSURE	EA	1
14	10	XDHZZ	5910-00-985-0243	FW5N102W	01121	CAPACITOR	EA	2
14	11	PAHZZ	5935-00-681-5685	UG88CU	80058	CONNECTO	EA	2
14	12	XDHZZ	5940-00-552-4878	MX1684U	80058	FERRULE, RADIO FREQU	EA	3
14	13	PAHZZ	5905-00-110-7620	RCR07G102JS	81349	RESISTOR, FIXE	EA	2
14	14	PAHZZ	5935-00-552-7660	UG625BU	80058	CONNECTOR	EA	2
14	15	XDHZZ		A212-040	23042	ENCLOSURE	EA	1
14	16	XDHZZ		A219-019	23042	PLATE, CAPACITOR	EA	1
14	17	XDHZZ		12020NP	73734	SCREW	EA	2
14	18	XDHZZ		A021-063	23042	CONTACT	EA	2
14	19	XDHZZ		047-286	23042	RESISTOR	EA	1
14	20	XDHZZ		1910NP	73734	TERMINAL	EA	2
14	21	PAHZZ	5905-00-133-0440	RCR07G560JS	81349	RESISTOR, FIXE	EA	2
14	22	XDHZZ		A212-041	23042	ENCLOSURE, MIXER	EA	1
14	23	XDHZZ		12029NP	73734	SCREW	EA	4

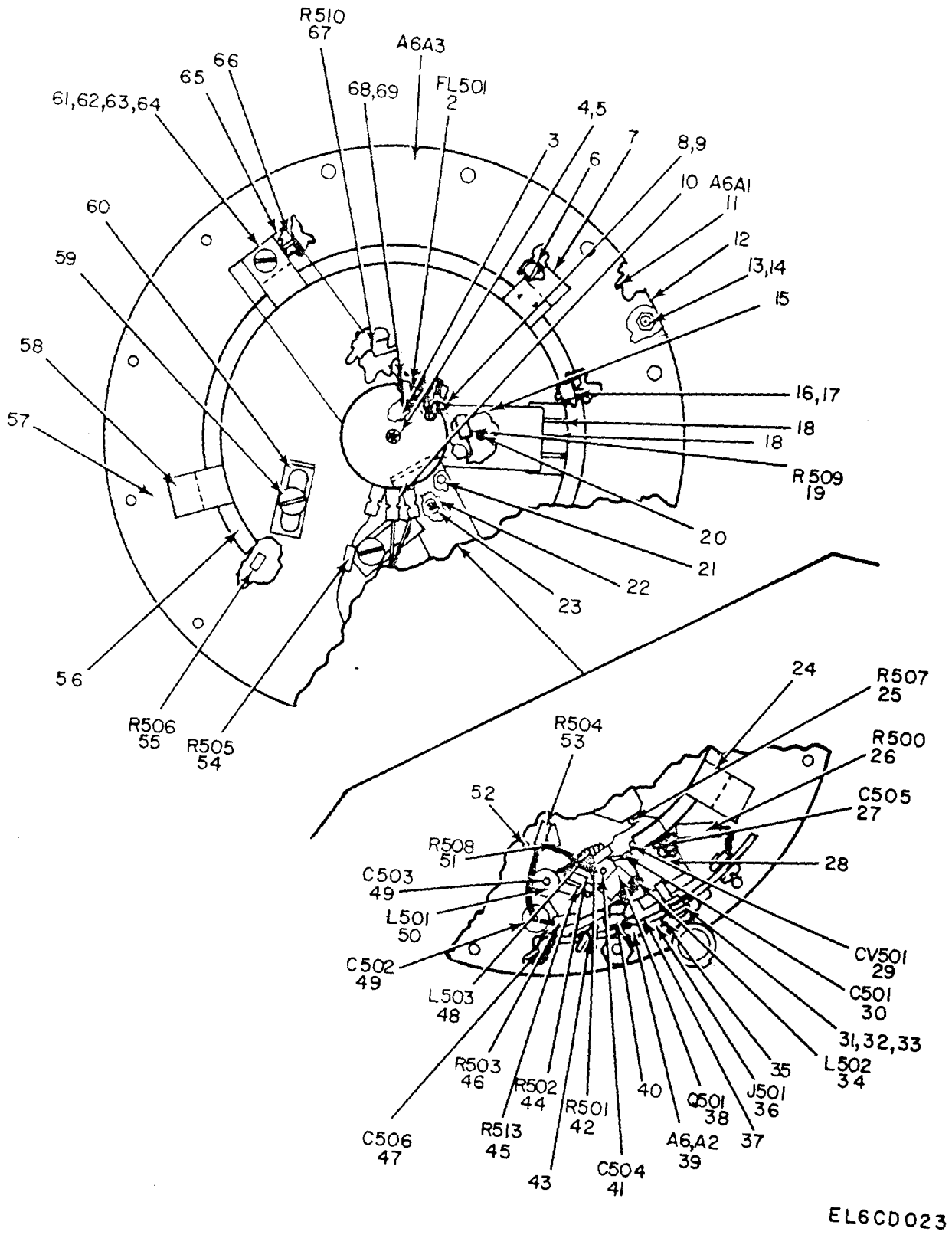
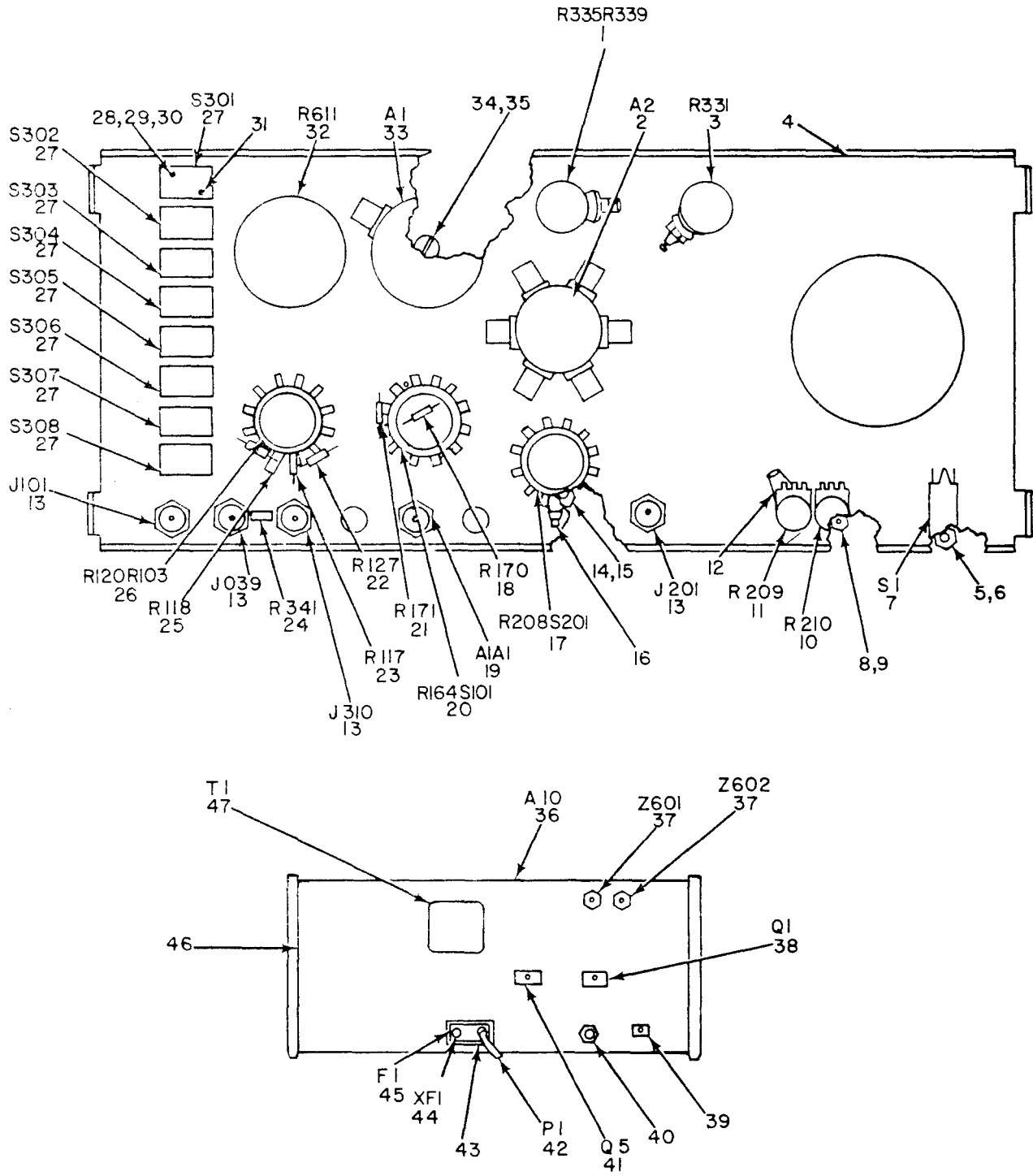


Figure 15. Variable Oscillator (A4A6).

SECTION II (1) ILLUSTRATION (A) FIG NO		(2) ITEM NO	(3) SMR CODE	(4) NATIONAL STOCK NUMBER	(5) PART NUMBER	(6) FSCM	DESCRIPTION	(7) USABLE ON CODE U/M	(8) QTY INC IN UNIT
GROUP 07 VARIABLE OSCILLATOR(A4A6)									
15	1	XDDZZ			A204-699	23042	BASE PLATE ASSEMBLY	EA	1
15	2	PADZZ		5915-00-229-1504	B204-348	23042	FILTER	EA	1
15	3	XDDZZ			055-127	23042	SPACER	EA	1
15	4	XDDZZ			3P	06229	CLAMP	EA	1
15	5	XDDZZ		5305-00-054-6655	MS51957-31	96906	SCREW	EA	4
15	6	XDDZZ		5305-00-054-5636	MS51957-2	96906	SCREW	EA	10
15	7	XDDZZ			A216-025	23042	BLOCK, MOUNTING	EA	1
15	8	XDDZZ		5940-00-578-9896	1958	73734	TERMINAL	EA	1
15	9	XDDZZ		5305-00-054-5647	MS51957-13	96906	SCREW, MACHINE	EA	1
15	10	XDDZZ			32-00169	07700	CONTACT	EA	1
15	11	XDDZZ			A204-343	23042	COVER ASSEMBLY	EA	1
15	12	XDDZZ			B211-055	23042	COVER	EA	1
15	13	XDDZZ		5310-00-011-1041	MS35338-79	96906	WASHER	EA	17
15	14	XDDZZ			MS35639-264	96906	NUT	EA	6
15	15	PADZZ		5999-00-491-5195	A221-009	23042	ROTOR, CONTACT	EA	1
15	16	XDDZZ			050-305	23042	SCREW	EA	4
15	17	XDDZZ			055-126	23042	SPACER	EA	4
15	18	PADZZ		6625-00-400-3688	A021-070	23042	CONTACT, WIPER	EA	2
15	19	XDDZZ			JA4G132F103UA	01121	RESISTOR, VARIABLE	EA	1
15	20	XDDZZ			028-006	23042	FASTENER, PIN	EA	4
15	21	XDDZZ			010-013	23042	BEARING	EA	1
15	22	XDDZZ			SC25	71041	COLLAR	EA	1
15	23	XDDZZ			A056-005	23042	SPRING	EA	1
15	24	XDDZZ			A216-006	23042	BLOCK, MOUNTING	EA	1
15	25	PADZZ		5905-00-111-4734	RCR20G470JS	81349	RESISTOR, FIXE	EA	1
15	26	PADZZ		5905-00-108-6922	RCR20G151JS	81349	RESISTOR, FIXE	EA	1
15	27	PADZZ		5910-00-520-2793	B012-193	23042	CAPACITOR, PLATE	EA	1
15	28	XDDZZ			018-012	23042	COLLAR	EA	1
15	29	PADZZ		5961-00-456-9042	VAT22ET	88236	VARACTOR	EA	1
15	30	XDDZZ			FCJ81	72982	CAPACITOR	EA	1
15	31	XDDZZ		5305-00-054-5648	MS51957-14	96906	SCREW, MACHINE	EA	12
15	32	XDDZZ		5310-00-933-8118	MS35338-78	96906	WASHER	EA	12
15	33	XDDZZ			A055-024-01	23042	SPACER	EA	6
15	34	XDDZZ			A035-01	23042	INDUCTOR	EA	1
15	35	XDDZZ			1901NP	73734	TERMINAL	EA	1
15	36	PADZZ		5935-00-295-3345	UG535U	80058	CONNECTOR	EA	1
15	37	XDDZZ		5305-00-054-5646	MS51957-12	96906	SCREW	EA	5
15	38	PADZZ		5961-00-520-2797	S29043	28584	TRANSISTOR	EA	1
15	39	XDDZZ			A204-344	23042	ENCLOSURE ASSEMBLY	EA	1

SECTION II (1) ILLUSTRATION		(2)	(3)	(4)	(5)	(6)	(7)	(8)
(A) FIG NO	(B) ITEM NO	SMR CODE	NATIONAL STOCK NUMBER	PART NUMBER	FSCM	DESCRIPTION	USABLE ON CODE U/M	QTY INC IN UNIT
15	40	XDDZZ		055-125	23042	SPACER	EA	3
15	41	PADZZ	5910-00-728-1597	SS5A102W	01121	CAPACITOR	EA	1
15	42	PADZZ	5905-00-106-3668	RCR07G220JS	81349	RESISTOR, FIXE	EA	1
15	43	XDDZZ		B212-198	23042	ENCLOSURE	EA	1
15	44	PADZZ	5905-00-403-8837	RCR05G223JS	81349	RESISTOR, FIXE	EA	1
15	45	PADZZ	5905-00-114-0710	RCR07G331JS	81349	RESISTOR, FIXE	EA	1
15	46	PADZZ	5905-00-104-8368	RCR07G470JS	81349	RESISTOR, FIXE	EA	1
15	47	PADZZ	5910-00-520-2711	A012-194	23042	CAPACITOR	EA	1
15	48	XDDZZ		A035-035-02	23042	INDUCTOR	EA	1
15	49	XDDZZ		FA5CGMV	01121	CAPACITOR	EA	2
15	50	XDDZZ		4426-4K	82142	INDUCTOR	EA	1
15	51	PADZZ	5905-00-141-1183	RCR07G101JS	81349	RESISTOR, FIXE	EA	1
15	52	XDDZZ		1900	73734	TERMINAL	EA	1
15	53	PADZZ	5905-00-110-7622	RCR07G682JS	81349	RESISTOR, FIXE	EA	1
15	54	PADZZ	5905-00-141-0743	RCR07G392JS	81349	RESISTOR, FIXE	EA	1
15	55	PADZZ	5905-00-106-9344	RCR20G101JS	81349	RESISTOR, FIXE	EA	1
15	56	XDDZZ		C215-017	23042	LINE, TUNING	EA	1
15	57	XDDZZ		C219-019	23042	BASE PLATE	EA	1
15	58	XDDZZ		A216-027	23042	BLOCK, MOUNTING	EA	1
15	59	XDDZZ	5305-00-054-6649	MS51957-25	96906	SCREW	EA	2
15	60	XDDZZ		A209-012	23042	BRACKET	EA	1
15	61	XDDZZ	5305-00-054-6650	MS51957-26	96906	SCREW	EA	1
15	62	XDDZZ		1315NP	73734	WASHER	EA	1
15	63	XDDZZ	5310-00-722-5998	MS15795-805	96906	WASHER	EA	1
15	64	XDDZZ	5310-00-638-8830	9020NP	73734	NUT	EA	1
15	65	XDDZZ		A209-051	23042	BRACKET, MOUNTING	EA	1
15	66	XDDZZ		A216-028	23042	BLOCK, MOUNTING	EA	1
15	67	XDDZZ		RCR20G100JS	81349	RESISTOR, FIXE	EA	1
15	68	XDDZZ		A026-001	23042	DRIVER, VERNIER	EA	1
15	69	XDDZZ	5305-00-054-6653	MS51957-29	96906	SCREW	EA	4

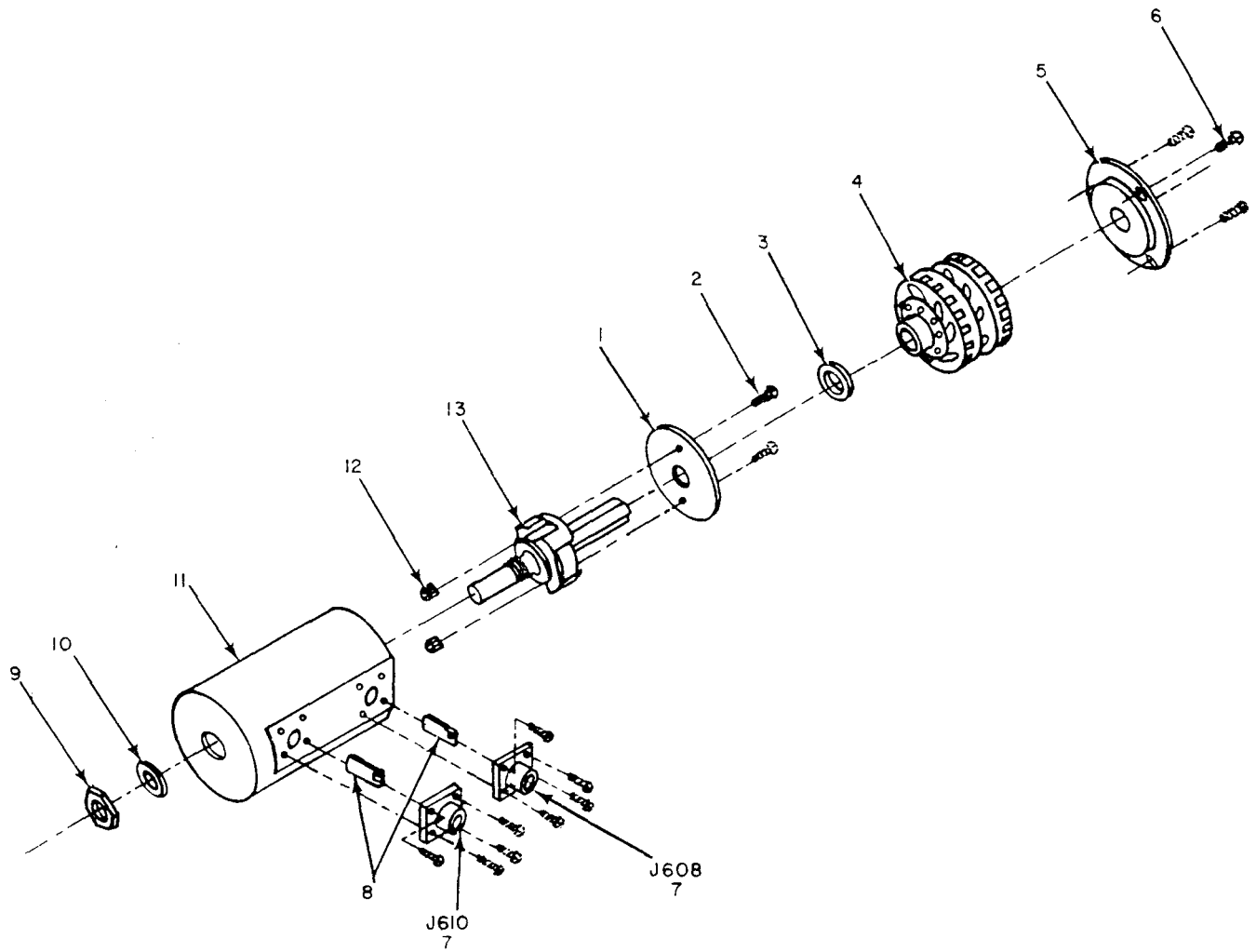


EL6CD024

Figure 16. Backing Panel Assembly (A4A11) (Rear Panel).

SECTION II (1) ILLUSTRATION (A) (B) FIG ITEM NO NO		(2) SMR CODE	(3) NATIONAL STOCK NUMBER	(4) PART NUMBER	(5) FSCM	(6) DESCRIPTION	(7) USABLE ON CODE U/M	(8) QTY INC IN UNIT
GROUP 08 BACKING PANEL ASSEMBLY(A4A11)								
(REAR PANEL)								
16	1	XDHZZ		C45-2-45	71450	RESISTOR,DUAL	EA	1
16	2	XDHDL		A200-030-02	23042	BANDSWITCH ASSEMBLY	EA	1
16	3	PAHZZ	5905-00-832-6933	048-051	23042	RESISTOR,VARIABLE	EA	1
16	4	XDHZZ		D217-030	23042	PANEL, BACKING	EA	1
16	5	XDHZZ		050-040	23042	WASHER	EA	5
16	6	XDHZZ	5310-00-161-0765	9027NP	73734	NUT	EA	10
16	7	PAHZZ	5930-00-231-1491	8280K16	00752	SWITCH,TOGGLE	EA	1
16	8	XDHZZ		050-036	23042	WASHER	EA	1
16	9	XDHZZ	5310-00-140-2146	050-015	23042	NUT	EA	4
16	10	PAHZZ	5905-00-520-2792	048-036	23042	RESISTOR,VARIABLE	EA	1
16	11	PAHZZ	5905-00-654-3904	048-035	23042	RESISTOR,VARIABLE	EA	1
16	12	XDHZZ	5940-00-578-9896	1958	73734	TERMINAL	EA	1
16	13	XDHZZ		5069-1	09408	CONNECTOR	EA	4
16	14	XDHZZ		1315NP	73734	WASHER	EA	5
16	15	XDHZZ	5310-00-638-8830	9020NP	73734	NUT	EA	6
16	16	XDHZZ		121100	73734	TERMINAL	EA	5
16	17	PAHZZ	5905-00-520-3279	212-25182-1VC	71450	RESISTOR,SWITCH	EA	1
16	18	PAHZZ	5905-00-105-7767	RCR07G474JS	81349	RESISTOR, FIXE	EA	1
16	19	XDHXX		A204-346	23042	DETECTOR	EA	1
16	20	XDHZZ		212A19436-2-2VC	71450	RESISTOR SWITCH	EA	1
16	21	PAHZZ	5905-00-114-5344	RCR07G184JS	81349	RESISTOR, FIXE	EA	1
16	22	PAHZZ	5905-00-111-4742	RCR20G391JS	81349	RESISTOR, FIXE	EA	1
16	23	PAHZZ	5905-00-119-3504	RCR07G273JS	81349	RESISTOR, FIXE	EA	1
16	24	PAHZZ	5905-00-141-0596	RCR20G473JS	81349	RESISTOR, FIXE	EA	1
16	25	PAHZZ	5905-00-106-1278	RCR07G123JS	81349	RESISTOR, FIXE	EA	1
16	26	PAHZZ	5905-00-654-3910	212-25211-3-3	71450	RESISTOR SWITCH	EA	1
16	27	PAHZZ	5930-00-150-1073	RS72FB	29604	SWITCH,PUSH	EA	8
16	28	XDHZZ		108301	73734	SPACER	EA	16
16	29	XDHZZ		12021NP	73734	SCREW	EA	17
16	30	XDHZZ		1302NP	73734	WASHER	EA	33
16	31	XDHZZ		12022NP	73734	SCREW	EA	18
16	32	PAHZZ	5905-00-141-1116	RCR20G562JS	81349	RESISTOR, FIXE	EA	1
16	33	PAHDL	6625-00-106-9603	B200-200-15	23042	ATTENUATOR	EA	1
16	34	XDHZZ		1305NP	73734	WASHER	EA	4
16	35	XDHZZ		12062NP	73734	SCREW	EA	4
16	36	XDHZZ		A204-422	23042	REAR PANEL ASSEMBLY	EA	1
16	37	XDHZZ		A200-005-01	23042	TERMINATION	EA	2
16	38	PAHZZ	5961-00-107-2571	N4922	47132	TRANSISTOR	EA	1

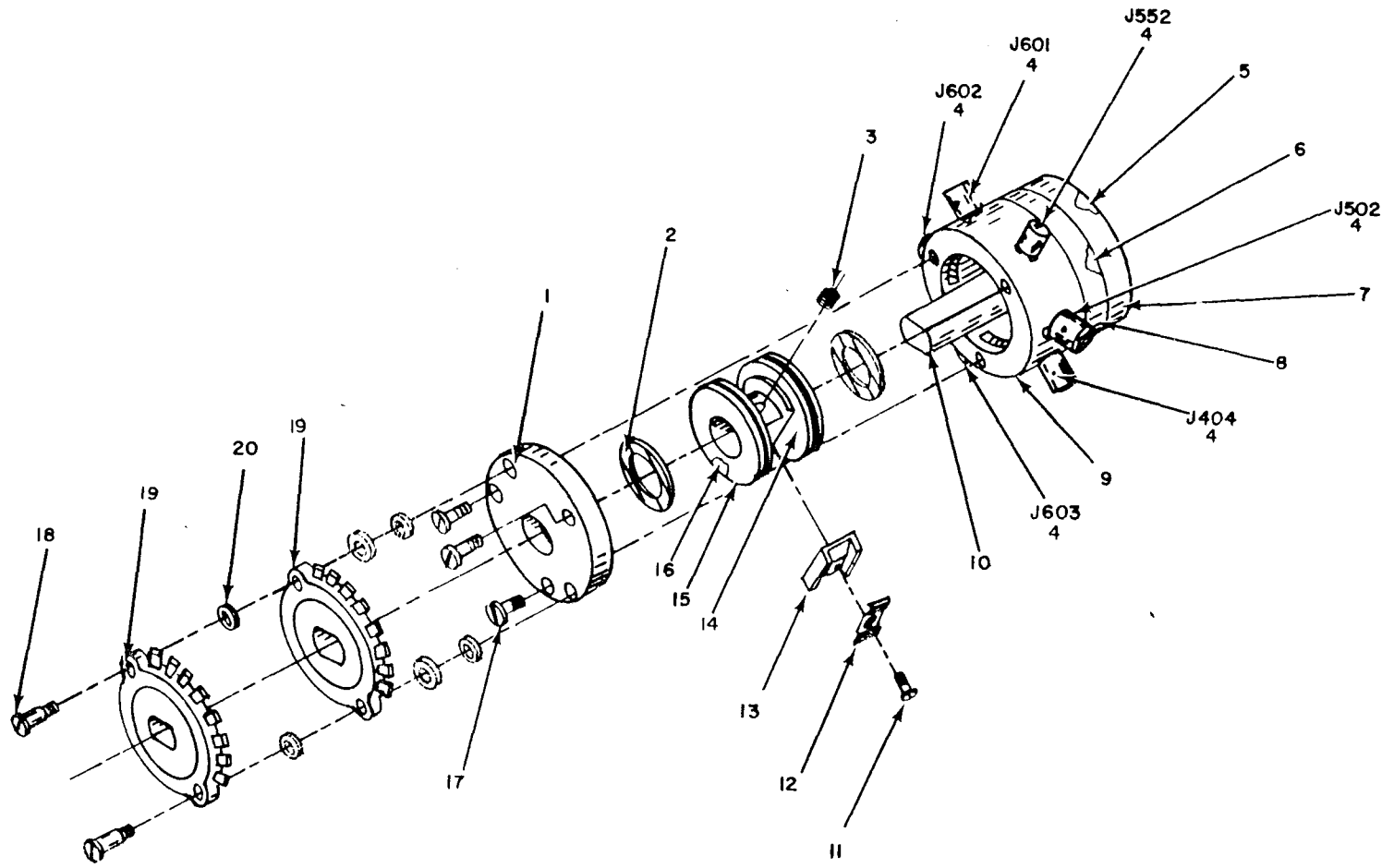
SECTION II (1) ILLUSTRATION		(2)	(3)	(4)	(5)	(6)	(7)	(8)
FIG NO	(B) ITEM NO	SMR CODE	NATIONAL STOCK NUMBER	PART NUMBER	FSCM	DESCRIPTION	USABLE ON CODE U/M	QTY INC IN UNIT
16	39	XDHZZ		A209-024	23042	BRACKET, MOUNTING	EA	1
16	40	PAHZZ	5935-00-552-7660	UG625BU	80058	CONNECTOR	EA	1
16	41	PAHZZ	5961-00-436-8953	2N4919	04713	TRANSISTOR	EA	1
16	42	XDHZZ		019-004	23042	LINE CORD CONDENSER	EA	1
16	43	XDHZZ	5975-00-351-6114	SR5P1	28520	GROMMET	EA	1
16	44	PAHZZ	5920-00-450-8063	342012	75915	FUSEHOLDER	EA	1
16	45	PAOZZ	5920-00-280-8342	312001	75915	FUSE	EA	1
16	46	XDHZZ		D212-033-00	23042	PANEL, REAR	EA	1
16	47	PAHZZ	5950-00-400-1450	3531	12715	TRANSFORMER, POWER	EA	1



EL6CD025

Figure 17. Attenuator (A4A11A1).

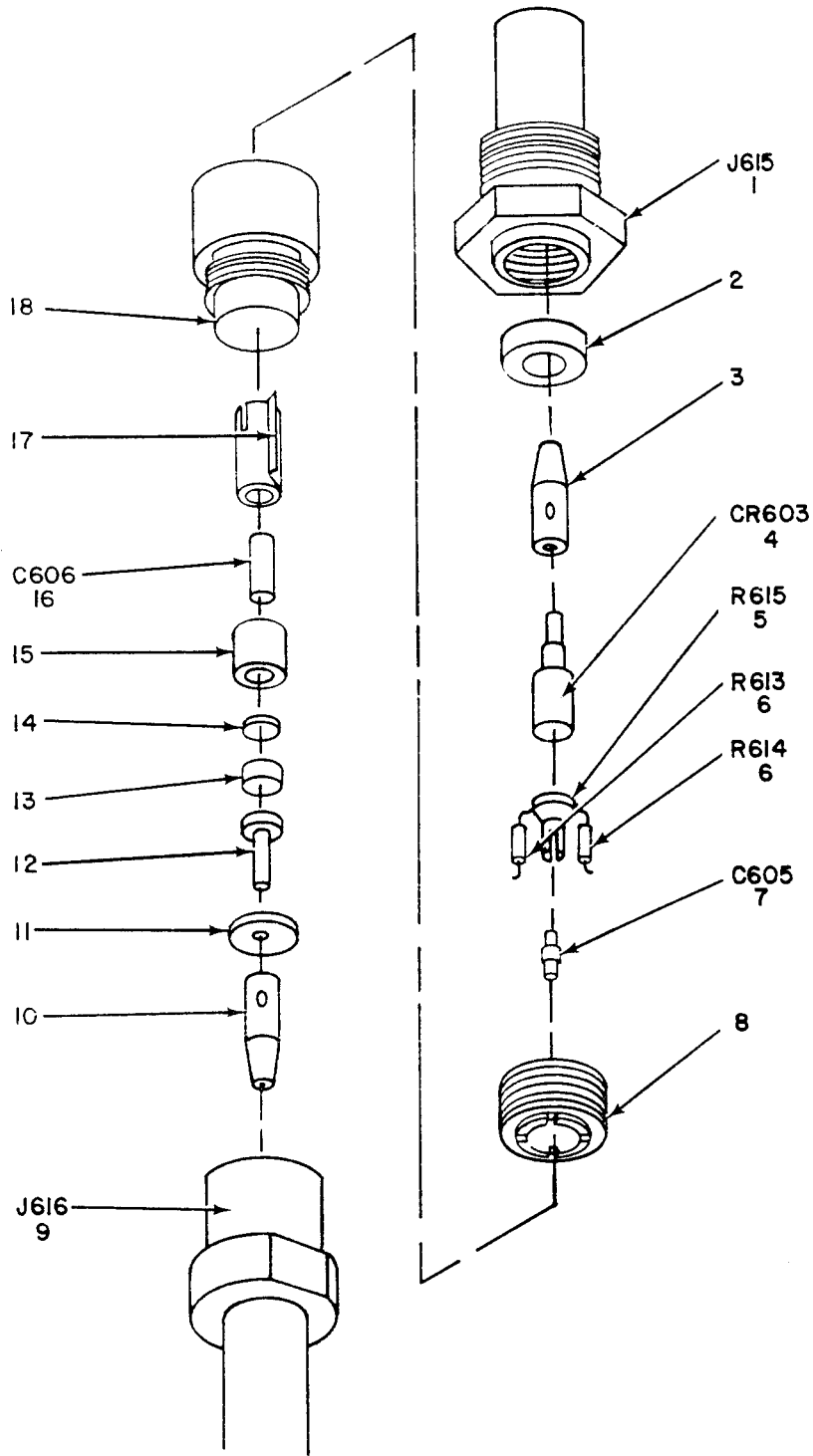
SECTION II (1) ILLUSTRATION		(2)	(3)	(4)	(5)	(6)	(7)	(8)
FIG NO	ITEM NO	SMR CODE	NATIONAL STOCK NUMBER	PART NUMBER	FSCM	DESCRIPTION	USABLE ON CODE U/M	QTY INC IN UNIT
GROUP 0801 ATTENUATOR (A4A11A1)								
17	1	XDDZZ		A223-040-00	23042	SHIELD, PLATE	EA	1
17	2	XDDZZ		12022NP	73734	SCREW	EA	2
17	3	XDDZZ		101402	73734	WASHER	EA	2
17	4	XDDZZ		B204-256-01	23042	ROTOR ASSEMBLY	EA	1
17	5	XDDZZ		A212-066	23042	ENCLOSURE	EA	1
17	6	XDDZZ		4001NP	73734	SCREW	EA	11
17	7	XDDZZ		A020-031	23042	CONNECTOR	EA	2
17	8	XDDZZ		A021-019	23042	CONTACT, WIPER	EA	2
17	9	XDDZZ	5310-00-638-8830	9020NP	73734	NUT	EA	1
17	10	XDDZZ		1315NP	73734	WASHER	EA	1
17	11	XDDZZ		B212-009-01	23042	ENCLOSURE, CASE	EA	1
17	12	XDDZZ		8003NP	73734	NUT	EA	2
17	13	XDDZZ		A057-011	23042	DETENT, SWITCH	EA	1



EL6CD026

Figure 18. Bandswitch Assembly (A4A11A2).

SECTION II (1) ILLUSTRATION		(2)	(3)	(4)	(5)	(6)	(7)	(8)
FIG NO	ITEM NO	SMR CODE	NATIONAL STOCK NUMBER	PART NUMBER	FSCM	DESCRIPTION	USABLE ON CODE U/M	QTY INC IN UNIT
GROUP 0802 BANDSWITCH ASSEMBLY (A4A11A2)								
18	1	XDDZZ		A055-020	23042	SPACER, SWITCH	EA	1
18	2	XDDZZ		101402	73734	WASHER	EA	2
18	3	XDDZZ		050-132	23042	SCREW	EA	2
18	4	XDDZZ		5327	09408	CONNECTOR	EA	6
18	5	XDDZZ		12003NP	73734	SCREW	EA	3
18	6	XDDZZ		050-131	23042	SCREW	EA	2
18	7	XDDZZ		A219-021	23042	PLATE, REAR	EA	1
18	8	XDDZZ		A219-020	23042	PLATE, FRONT	EA	1
18	9	XDDZZ		A212-044	23042	ENCLOSURE, SWITCH	EA	1
18	10	XDDZZ		A214-003	23042	HUB, SWITCH	EA	1
18	11	XDDZZ		102212	73734	SCREW	EA	2
18	12	XDDZZ		A021-011	23042	CONTACT	EA	2
18	13	XDDZZ		A055-021	23042	SPACER, SUPPORT	EA	2
18	14	XDDZZ		A057-012-02	23042	DETENT, SWITCH	EA	1
18	15	XDDZZ		1315NP	73734	WASHER	EA	1
18	16	XDDZZ	5310-00-638-8830	9020NP	73734	NUT	EA	1
18	17	XDDZZ		18408NP	73734	SCREW	EA	3
18	18	XDDZZ		12027NP	73734	SCREW	EA	2
18	19	XDDZZ		A057-013	23042	SWITCH, WAFER	EA	2
18	20	XDDZZ		104310	73734	WASHER	EA	6



EL6CD027

Figure 19. Detector (A4A1A1).

SECTION II (1) ILLUSTRATION		(2)	(3)	(4)	(5)	(6)	(7)	(8)
FIG NO	ITEM NO	SMR CODE	NATIONAL STOCK NUMBER	PART NUMBER	FSCM	DESCRIPTION	USABLE ON CODE U/M	QTY INC IN UNIT
GROUP 0803 DETECTOR (A4A1A1)								
19	1	XDHZZ		A020-122	23042	CONNECTOR	EA	1
19	2	XDHZZ		A055-097	23042	SPACER	EA	3
19	3	XDHZZ		A022-022	23042	COUPLING	EA	1
19	4	PAHZZ	5961-00-453-8558	025-041	23042	DIODE	EA	1
19	5	PAHZZ	5905-00-120-9154	RCR07G471JS	81349	RESISTOR, FIXE	EA	1
19	6	XDHZZ		045-696	23042	RESISTOR	EA	2
19	7	XDHZZ		A021-140	23042	CAPACITOR	EA	1
19	8	XDHZZ		A022-023	23042	COUPLING, MINOR	EA	1
19	9	XDHZZ		020-119	23042	CONNECTOR	EA	1
19	10	XDHZZ		A022-020-01	23042	COUPLING	EA	1
19	11	XDHZZ		A055-093	23042	SPACER	EA	1
19	12	XDHZZ		A021-044	23042	CONTACT, PIN	EA	1
19	13	XDHZZ		021-037	23042	CONTACT, BUTTON	EA	1
19	14	XDHZZ		A055-096	23042	SPACER	EA	1
19	15	XDHZZ		A021-061	23042	CONTACT	EA	1
19	16	XDHZZ		012-211	23042	CAPACITOR	EA	1
19	17	XDHZZ		A017-009	23042	CLAMP, CONTACT	EA	1
19	18	XDHZZ		B022-028	23042	COUPLING, MAJOR	EA	1

NATIONAL STOCK NUMBER AND PART NUMBER INDEX

STOCK NUMBER	FIGURE NO	ITEM NO	STOCK NUMBER	FIGURE NO	ITEM NO
6625-00-001-1377	4	3	6625-00-106-9602	13	24
6625-00-001-1378	2	13	6625-00-106-9603	16	33
5310-00-011-1041	2	6	5905-00-107-0656	12	28
5310-00-011-1041	11	21	5961-00-107-2571	16	38
5310-00-011-1041	15	13	6210-00-107-5166	2	19
5961-00-022-7632	3	95	5905-00-108-6922	15	26
5910-00-043-1365	3	11	5905-00-110-0196	3	69
5961-00-044-4808	3	26	5905-00-110-0310	3	65
5305-00-054-5636	15	6	5905-00-110-0388	3	46
5305-00-054-5644	5	23	5905-00-110-0388	8	12
5305-00-054-5644	7	20	5905-00-110-7620	3	52
5305-00-054-5644	9	20	5905-00-110-7620	4	9
5305-00-054-5644	14	6	5905-00-110-7620	10	12
5305-00-054-5646	2	20	5905-00-110-7620	12	16
5305-00-054-5646	15	37	5905-00-110-7620	14	13
5305-00-054-5647	2	21	5905-00-110-7622	12	17
5305-00-054-5647	4	24	5905-00-110-7622	15	53
5305-00-054-5647	13	32	5905-00-111-1678	3	58
5305-00-054-5647	15	9	5905-00-111-4727	14	8
5305-00-054-5648	15	31	5905-00-111-4734	15	25
5305-00-054-5649	11	19	5905-00-111-4742	16	22
5305-00-054-5649	13	35	5905-00-114-0710	3	89
5305-00-054-6649	15	59	5905-00-114-0710	12	34
5305-00-054-6650	2	3	5905-00-114-0710	15	45
5305-00-054-6650	15	61	5905-00-114-0711	3	79
5305-00-054-6653	15	69	5905-00-114-0711	12	25
5305-00-054-6655	2	5	5905-00-114-5344	3	76
5305-00-054-6655	15	5	5905-00-114-5344	16	21
5910-00-074-1893	12	11	5905-00-114-5388	12	26
5910-00-094-6456	6	6	5905-00-114-5393	3	64
5910-00-094-6456	8	5	5905-00-114-5438	12	29
5910-00-094-6456	13	26	5905-00-114-5438	13	33
5955-00-100-1135	10	5	5905-00-115-3560	6	19
5910-00-100-7808	3	10	6625-00-115-9052	4	2
5905-00-102-5154	3	51	6625-00-115-9053	9	3
5905-00-102-5159	3	80	5905-00-116-8554	3	47
5905-00-102-5160	3	36	5905-00-116-8555	3	85
5961-00-103-3981	3	30	5905-00-116-8556	3	57
5961-00-103-3981	4	6	5905-00-116-8556	6	14
			5905-00-116-8556	8	16
5905-00-104-8333	3	45	5905-00-118-4559	3	54
5905-00-104-8348	3	34	5905-00-119-3503	3	90
5905-00-104-8358	3	60	5905-00-119-3503	13	16
5905-00-104-8363	3	87	5905-00-119-3504	3	73
5905-00-104-8368	15	46	5905-00-119-3504	16	23
5961-00-105-5488	3	93	5905-00-119-3505	3	55
5905-00-105-7765	3	88	5905-00-119-8812	6	16
5905-00-105-7765	4	8	5905-00-119-8812	8	13
5905-00-105-7765	6	18	5905-00-120-9154	19	5
5905-00-105-7765	8	15	5905-00-126-6683	13	17
5905-00-105-7765	10	17	5905-00-126-6694	3	81
5905-00-105-7767	6	15	5905-00-131-1255	3	61
5905-00-105-7767	16	18	5905-00-133-0440	14	21
5905-00-105-7768	12	23	5905-00-135-3973	10	15
5905-00-106-1245	3	38	5905-00-135-3973	12	24
5905-00-106-1249	13	14	5905-00-135-3973	14	4
5905-00-106-1273	3	67	5905-00-135-6045	3	84
5905-00-106-1278	3	83	5905-00-135-6046	3	86
5905-00-106-1278	8	14	5905-00-135-6046	12	19
5905-00-106-1278	16	25	5310-00-140-2146	4	19
5905-00-106-1282	3	39	5310-00-140-2146	16	9
5905-00-106-1282	5	6	5305-00-140-2163	3	98
5905-00-106-1282	7	5			
5905-00-106-1356	3	50	5905-00-141-0592	3	70
5905-00-106-1357	3	56	5905-00-141-0595	3	66
5905-00-106-3666	3	53	5905-00-141-0595	13	12
5905-00-106-3666	4	7	5905-00-141-0596	9	5
5905-00-106-3666	8	11	5905-00-141-0596	16	24
5905-00-106-3666	10	16	5905-00-141-0717	10	13
5905-00-106-3666	12	30	5905-00-141-0743	12	27
5905-00-106-3666	13	18	5905-00-141-0743	15	54
5905-00-106-3666	14	3	5905-00-141-1116	3	35
5905-00-106-3667	6	17	5905-00-141-1116	5	22
5905-00-106-3668	12	22	5905-00-141-1116	16	32
5905-00-106-3668	15	42	5905-00-141-1118	12	20
5905-00-106-9344	3	43	5905-00-141-1130	3	68
5905-00-106-9344	15	55	5905-00-141-1132	12	31
6625-00-106-9598	4	1	5905-00-141-1165	7	19
6625-00-106-9599	1	12	5905-00-141-1165	9	19
6625-00-106-9601	1	10	5905-00-141-1168	3	32

NATIONAL STOCK NUMBER AND PART NUMBER INDEX

NOTE: LATEST NATIONAL STOCK NUMBER ASSIGNMENTS ARE INCLUDED AT END OF INDEX

STOCK NUMBER	FIGURE NO	ITEM NO	STOCK NUMBER	FIGURE NO	ITEM NO		
5905-00-141-1183	3	63	5910-00-577-6040	3	3		
5905-00-141-1183	4	11	5910-00-577-6998	13	34		
5905-00-141-1183	12	18	5940-00-578-9896	15	8		
5905-00-141-1183	15	51	5940-00-578-9896	16	12		
5355-00-146-9601	2	28	5310-00-638-8830	5	12		
5355-00-146-9602	2	12	5310-00-638-8830	7	11		
5355-00-147-3502	2	27	5310-00-638-8830	9	10		
5930-00-150-1073	16	27	5310-00-638-8830	11	6		
5961-00-153-4441	3	96	5310-00-638-8830	15	64		
5310-00-161-0765	1	17	5310-00-638-8830	16	15		
5310-00-161-0765	2	18	5310-00-638-8830	17	9		
5310-00-161-0765	16	6	5310-00-638-8830	18	16		
6625-00-173-2283	1	11	5910-00-654-3895	3	2		
6625-00-173-2285	1	8	5905-00-654-3904	16	11		
			5905-00-654-3910	4	12		
			5905-00-654-3910	16	26		
5905-00-201-6735	3	48	5935-00-681-5685	1	13		
5905-00-228-6081	3	31	5935-00-681-5685	5	17		
5915-00-229-1504	15	2	5935-00-681-5685	7	15		
5930-00-231-1491	16	7	5935-00-681-5685	9	15		
5905-00-246-9393	12	21	5935-00-681-5685	14	11		
5905-00-247-8715	3	72	5961-00-683-4777	6	9		
5905-00-247-8722	12	32	5961-00-683-4777	8	7		
5905-00-247-8735	3	41	5961-00-683-4777	10	6		
5905-00-249-3663	3	71	5961-00-683-4777	13	19		
5905-00-252-1050	3	44	5910-00-702-0568	3	5		
5961-00-252-1331	12	15	5905-00-720-3002	3	49		
5905-00-252-1671	10	14	5905-00-720-3003	3	59		
5905-00-279-1933	12	33	5310-00-722-5998	15	63		
5940-00-280-0601	3	101	5940-00-727-3107	3	102		
5940-00-280-0601	12	35	5910-00-728-1597	15	41		
5940-00-280-0601	13	21	5905-00-730-3285	4	10		
5920-00-280-8342	16	45	5950-00-760-0104	13	25		
5935-00-295-3345	15	36	5935-00-762-8517	4	5		
5975-00-351-6114	16	43	5915-00-763-7767	13	6		
5905-00-369-6929	3	40					
5950-00-400-1450	16	47	5910-00-827-1209	3	13		
6625-00-400-3688	15	18	5961-00-828-0719	3	25		
5905-00-400-4528	3	75	5905-00-832-6933	16	3		
5905-00-403-8837	15	44	5910-00-834-3660	12	1		
5960-00-407-6018	3	21	5961-00-839-9589	3	92		
5905-00-435-6374	3	74	5910-00-850-3894	3	12		
5961-00-436-8953	16	41	5910-00-858-8698	6	3		
5910-00-441-7949	3	4	5910-00-858-8698	8	3		
5920-00-450-8063	16	44	5910-00-858-8700	6	5		
5961-00-453-8558	19	4	5910-00-858-8700	12	10		
5905-00-454-2875	3	33	5910-00-880-4289	12	5		
6625-00-455-6883	7	3	5961-00-898-1213	6	13		
6625-00-455-6894	5	4	5961-00-898-1213	8	10		
5961-00-456-9042	15	29	5961-00-898-1213	10	11		
5905-00-457-0973	3	42	5961-00-905-9394	8	9		
5905-00-485-4545	3	77	5961-00-905-9394	10	10		
5999-00-491-5195	15	15	5935-00-913-7551	1	15		
5910-00-493-6506	3	1	5935-00-913-7551	2	16		
5910-00-493-6510	10	4	5930-00-919-1755	3	91		
5910-00-494-9022	11	4	5910-00-924-7055	13	38		
5910-00-520-2711	15	47	5961-00-930-5325	3	27		
5910-00-520-2736	12	8	5961-00-930-5325	6	12		
5905-00-520-2792	16	10	5961-00-931-8259	3	23		
5910-00-520-2793	15	27	5310-00-933-8118	15	32		
5961-00-520-2797	15	38	5905-00-935-8539	3	62		
5905-00-520-3279	16	17	5905-00-935-8545	3	37		
5910-00-542-2010	12	7	5961-00-938-1089	13	15		
5940-00-552-4878	5	14	5961-00-938-7645	14	5		
5940-00-552-4878	7	12	5961-00-947-8263	3	28		
5940-00-552-4878	9	12	5961-00-948-5977	3	94		
5940-00-552-4878	14	12	5910-00-963-8069	5	19		
5935-00-552-7660	5	11	5910-00-985-0243	14	10		
5935-00-552-7660	7	9	5961-00-985-9073	3	24		
5935-00-552-7660	9	9	5910-00-989-4367	6	4		
5935-00-552-7660	11	8	5910-00-989-4367	10	1		
5935-00-552-7660	14	14	5905-00-995-6406	3	82		
5935-00-552-7660	16	40	5961-00-998-9314	11	9		
PART NUMBER	FSCM	FIG NO	ITEM NO	PART NUMBER	FSCM	FIG NO	ITEM NO
A012-194	23042	15	47	A020-031	23042	17	7
A017-009	23042	19	17	A020-122	23042	19	1

TM11-6625-2575-24P
SECTION IV
NATIONAL STOCK NUMBER AND PART NUMBER INDEX

PART NUMBER	FSCM	FIG NO	ITEM NO	PART NUMBER	FSCM	FIG NO	ITEM NO
A020-138	23042	13	4	A214-003	23042	18	10
A021-011	23042	18	12	A216-006	23042	15	24
A021-019	23042	17	8	A216-025	23042	15	7
A021-044	23042	19	12	A216-027	23042	15	58
A021-061	23042	19	15	A216-028	23042	15	66
A021-063	23042	14	18	A219-018	23042	13	39
A021-070	23042	15	18	A219-019	23042	14	16
A021-140	23042	19	7	A219-020	23042	18	8
A022-020-01	23042	19	10	A219-021	23042	18	7
A022-022	23042	19	3	A221-009	23042	15	15
A022-023	23042	19	8	A223-030-01	23042	13	7
A024-023	23042	2	26	A223-040-00	23042	17	1
A026-001	23042	15	68	B012-193	23042	15	27
A035-01	23042	15	34	B022-028	23042	19	18
A035-029	23042	12	13	B042-004-09	23042	2	27
A035-035-02	23042	15	48	B042-004-13	23042	2	28
A042-005	23042	2	25	B042-004-16	23042	2	12
A043-007	23042	2	13	B200-200-15	23042	16	33
A055-006	23042	11	14	B204-215	23042	5	1
A055-006	23042	13	36	B204-215	23042	7	21
A055-020	23042	18	1	B204-215	23042	9	21
A055-021	23042	18	13	B204-256-01	23042	17	4
A055-024-01	23042	15	33	B204-348	23042	15	2
A055-093	23042	19	11	B209-089	23042	11	12
A055-096	23042	19	14	B211-042	23042	11	18
A055-097	23042	19	2	B211-055	23042	15	12
A056-005	23042	15	23	B212-009-01	23042	17	11
A057-011	23042	17	13	B212-051	23042	13	10
A057-012-02	23042	18	14	B212-198	23042	15	43
A057-013	23042	18	19	B37860	91418	12	2
A058-014-01	23042	5	2	CCN34	92219	4	16
A058-014-03	23042	7	1	C209-007	23042	3	107
A058-014-04	23042	9	1	C210-010	23042	4	21
A061-033	23042	13	25	C212-005-02	23042	1	3
A13D2	03508	3	18	C212-006-01	23042	1	4
A200-005-01	23042	16	37	C212-156-01	23042	11	15
A200-010	23042	4	3	C215-017	23042	15	56
A200-011	23042	4	2	C219-019	23042	15	57
A200-015	23042	4	1	C45-2-45	71450	16	1
A200-030-02	23042	16	2	C80-51	95121	10	3
A204-007	23042	9	3	DMF1P22-10	14655	3	11
A204-010	23042	7	3	D204-052	23042	1	11
A204-012	23042	5	4	D212-004-16	23042	3	99
A204-055	23042	1	8	D212-033-00	23042	16	46
A204-059	23042	13	5	D217-030	23042	16	4
A204-214	23042	13	6	D218-057	23042	2	29
A204-250	23042	1	5	EMW2052-250-75	12674	3	2
A204-343	23042	15	11	EMW2452-250-50	12674	3	8
A204-344	23042	15	39	EMW2868-450-90	12674	3	6
A204-346	23042	16	18	E8	84970	3	17
A204-421	23042	1	14	FA5C	01121	11	4
A204-422	23042	16	36	FA5CGMV	01121	5	8
A204-428	23042	1	6	FA5CGMV	01121	7	6
A204-437	23042	3	100	FA5CGMV	01121	9	6
A204-439	23042	11	22	FA5CGMV	01121	9	6
A204-446	23042	1	12	FA5CGMV	01121	12	12
A204-519	23042	1	10	FA5CGMV	01121	13	1
A204-695	23042	13	24	FA5CGMV	01121	14	1
A204-696	23042	1	7	FA5CGMV	01121	15	49
A204-697	23042	2	14	FCJ81	72982	15	30
A204-698	23042	1	9	FW5N102W	01121	14	10
A204-699	23042	15	1	F1152	05397	3	29
A209-012	23042	15	60	G126	79727	3	91
A209-024	23042	5	5	HD5003	73293	14	5
A209-024	23042	7	4	H0-813-5	93292	3	22
A209-024	23042	9	4	JA4G132F103UA	01121	15	19
A209-024	23042	16	39	K1R5C35K	05397	3	12
A209-051	23042	15	65	MEP53867	12674	3	1
A209-127	23042	2	15	MJE340	04713	3	25
A210-079	23042	13	40	MS15795-805	96906	15	63
A211-007	23042	14	9	MS35338-78	96906	15	32
A211-011	23042	13	20	MS35338-79	96906	2	6
A212-021	23042	5	24	MS35338-79	96906	11	21
A212-021	23042	7	22	MS35338-79	96906	15	13
A212-021	23042	9	22	MS35639-264	96906	15	14
A212-040	23042	14	15	MS51957-11	96906	5	23
A212-041	23042	14	22	MS51957-11	96906	7	20
A212-044	23042	18	9	MS51957-11	96906	9	20
A212-066	23042	17	5	MS51957-11	96906	14	6
A212-077	23042	13	9	MS51957-12	96906	2	20

TM11-6625-2575-24P
SECTION IV
NATIONAL STOCK NUMBER AND PART NUMBER INDEX

PART NUMBER	FSCM	FIG NO	ITEM NO	PART NUMBER	FSCM	FIG NO	ITEM NO
MS51957-12	96906	15	37	RCR07G332JS	81349	13	17
MS51957-13	96906	2	21	RCR07G333JS	81349	3	54
MS51957-13	96906	4	24	RCR07G334JS	81349	3	77
MS51957-13	96906	13	32	RCR07G392JS	81349	12	27
MS51957-13	96906	15	9	RCR07G392JS	81349	15	54
MS51957-14	96906	15	31	RCR07G4R7JS	91349	12	21
MS51957-15	96906	11	19	RCR07G470JS	91349	15	46
MS51957-15	96906	13	35	RCR07G471JS	81349	19	5
MS51957-2	96906	15	6	RCR07G472JS	81349	3	79
MS51957-25	96906	15	59	RCR07G472JS	81349	12	25
MS51957-26	96906	2	3	RCR07G474JS	81349	6	15
MS51957-26	96906	15	61	RCR07G474JS	81349	16	18
MS51957-29	96906	15	69	RCR07G475JS	81349	3	81
MS51957-31	96906	2	5	RCR07G510JS	81349	13	14
MS51957-31	96906	15	5	RCR07G560JS	81349	14	21
MTV50DE50	37942	3	4	RCR07G561JS	81349	12	23
MX1684U	80058	5	14	RCR07G563JS	81349	3	56
MX1684U	80058	7	12	RCR07G564JS	81349	3	58
MX1684U	80058	9	12	RCR07G681JS	81349	3	86
MX1684U	80058	14	12	RCR07G681JS	81349	12	19
NP028422	91418	12	6	RCR07G682JS	81349	12	17
N4922	47132	16	38	RCR07G682JS	81349	15	53
RCGF292K	80058	3	65	RCR07G683JS	81349	3	55
RCR05G223JS	81349	15	44	RCR07G752JS	81349	12	31
RCR07G100JS	81349	12	28	RCR07G820JS	81349	3	87
RCR07G101JS	81349	3	63	RCR07G822JS	81349	3	60
RCR07G101JS	81349	4	11	RCR07G823JS	81349	3	74
RCR07G101JS	81349	12	18	RCR20G100JS	81349	15	67
RCR07G101JS	81349	15	51	RCR20G101JS	81349	3	43
RCR07G102JS	81349	3	52	RCR20G101JS	81349	15	55
RCR07G102JS	81349	4	9	RCR20G102JS	81349	3	69
RCR07G102JS	81349	10	12	RCR20G122JS	81349	3	70
RCR07G102JS	81349	12	16	RCR20G151JS	81349	15	26
RCR07G102JS	81349	14	13	RCR20G153JS	81349	3	67
RCR07G103JS	81349	3	53	RCR20G183JS	81349	3	37
RCR07G103JS	81349	4	7	RCR20G184JS	81349	3	45
RCR07G103JS	81349	8	11	RCR20G202JS	81349	3	62
RCR07G103JS	81349	10	16	RCR20G220JS	81349	12	26
RCR07G103JS	81349	12	30	RCR20G222JS	81349	3	32
RCR07G103JS	81349	13	18	RCR20G223JS	81349	3	39
RCR07G103JS	81349	14	3	RCR20G223JS	81349	5	6
RCR07G104JS	81349	3	46	RCR20G223JS	81349	7	5
RCR07G104JS	81349	8	12	RCR20G272JS	81349	3	68
RCR07G105JS	81349	3	47	RCR20G332JS	81349	3	34
RCR07G120JS	81349	6	17	RCR20G390JS	81349	12	20
RCR07G121JS	81349	6	16	RCR20G391JS	81349	16	22
RCR07G121JS	81349	8	13	RCR20G470JS	81349	15	25
RCR07G122JS	81349	3	61	RCR20G472JS	81349	3	66
RCR07G123JS	81349	3	83	RCR20G472JS	81349	13	12
RCR07G123JS	81349	8	14	RCR20G473JS	81349	9	5
RCR07G123JS	81349	16	25	RCR20G473JS	81349	16	24
RCR07G124JS	81349	3	75	RCR20G510JS	81349	12	29
RCR07G152JS	81349	3	50	RCR20G510JS	81349	13	33
RCR07G153JS	81349	3	85	RCR20G562JS	81349	3	35
RCR07G183JS	81349	6	19	RCR20G562JS	81349	5	22
RCR07G184JS	81349	3	76	RCR20G562JS	81349	16	32
RCR07G184JS	81349	16	21	RCR20G682JS	81349	7	19
RCR07G220JS	81349	12	22	RCR20G682JS	81349	9	19
RCR07G220JS	81349	15	42	RCR32G121JS	81349	3	31
RCR07G221JS	81349	10	15	RCR32G180JS	81349	3	33
RCR07G221JS	81349	12	24	RCR32G224JS	81349	3	72
RCR07G221JS	81349	14	4	RCR32G271JS	81349	12	32
RCR07G223JS	81349	3	57	RCR32G272JS	81349	3	38
RCR07G223JS	81349	6	14	RCR32G393JS	81349	3	44
RCR07G223JS	81349	8	16	RCR32G473JS	81349	3	40
RCR07G224JS	81349	3	88	RCR32G563JS	81349	3	41
RCR07G224JS	81349	4	8	RCR42GF221J	81349	12	33
RCR07G224JS	81349	6	18	RCR42GF683J	81349	3	71
RCR07G224JS	81349	8	15	RC09GF473J	80058	3	48
RCR07G224JS	81349	10	17	RC09GF473JS	81349	10	13
RCR07G225JS	81349	10	14	RC10BF224K	80058	3	64
RCR07G271JS	81349	3	90	RS72FB	29604	16	27
RCR07G271JS	81349	13	16	SC25	71041	15	22
RCR07G272JS	81349	14	8	SE3002	28584	13	15
RCR07G273JS	81349	3	73	SMGMV24161	91418	3	14
RCR07G273JS	81349	16	23	SMGMV24161	91418	6	2
RCR07G330JS	81349	3	84	SMGMV24161	91418	10	2
RCR07G331JS	81349	3	84	SMGMV24161	91418	12	4
RCR07G331JS	81349	12	39	SMGMV24161	91418	14	2
RCR07G331JS	81349	15	45	SR5P1	28520	16	43

TM11-6625-2575-24P
SECTION IV
NATIONAL STOCK NUMBER AND PART NUMBER INDEX

PART NUMBER	FSCM	FIG NO	ITEM NO	PART NUMBER	FSCM	FIG NO	ITEM NO
SS5A102W	01121	15	41	042-006	23042	2	11
S29043	28584	15	38	044-002	23042	5	20
TA24168	91418	12	9	044-002	23042	7	16
TA28425	91418	3	15	044-002	23042	9	17
TA28425	91418	4	4	045-696	23042	19	6
TA28425	91418	5	18	047-286	23042	14	19
TA28425	91418	6	1	048-035	23042	16	11
TA28425	91418	12	3	048-036	23042	16	10
UG185U	81349	11	17	048-051	23042	16	3
UG185U	81349	13	28	048-054	23042	3	59
UG535U	80058	15	36	048-109	23042	4	12
UG625BU	80058	5	11	050-015	23042	4	19
UG625BU	80058	7	9	050-015	23042	16	9
UG625BU	80058	9	9	050-019	23042	5	15
UG625BU	80058	11	8	050-019	23042	7	14
UG625BU	80058	14	14	050-019	23042	9	13
UG625BU	80058	16	40	050-022	23042	14	7
UG88CU	80058	1	13	050-025	23042	13	30
UG88CU	80058	5	17	050-036	23042	4	20
UG88CU	80058	7	15	050-036	23042	16	8
UG88CU	80058	9	15	050-040	23042	1	16
UG88CU	80058	14	11	050-040	23042	2	17
UPE200RE1KOHMS	71450	3	36	050-040	23042	16	5
UPE200RE1MOHMS	71450	3	49	050-041	23042	5	16
UPE200RE2KOHMS	71450	3	51	050-041	23042	7	13
UPE200RE25KOHMS	71450	3	42	050-041	23042	9	14
UPE200RE250KOHMS	71450	3	80	050-102	23042	1	1
UPE200RE5KOHMS	71450	3	78	050-122	23042	5	21
UPM45-1KOHMS	71450	3	82	050-122	23042	7	17
U201SS10KOHMS	71450	4	10	050-122	23042	9	16
VAT22ET	88236	15	29	050-122	23042	11	23
VC22GY	82142	13	38	050-131	23042	18	6
VR15A	84970	3	95	050-132	23042	18	3
VR18A	84970	3	94	050-140	23042	2	2
VR28A	84970	3	96	050-222	23042	3	98
VR7A	84970	3	93	050-305	23042	15	16
Z5UR1	91418	7	18	055-007	23042	5	3
Z5UR1	91418	8	1	055-007	23042	7	2
Z5UR1	91418	9	18	055-007	23042	9	2
Z82R10	74276	3	21	055-013	23042	13	13
010-013	23042	15	21	055-125	23042	15	40
012-007	23042	6	4	055-126	23042	15	17
012-007	23042	10	1	055-127	23042	15	3
012-008	23042	10	4	056-004	23042	13	11
012-010	23042	6	3	059-019	23042	11	10
012-010	23042	8	3	059-032	23042	11	3
012-011	23042	8	4	1N3287	80131	3	20
012-012	23042	6	6	1N457A	28107	3	19
012-012	23042	8	5	1N708A	80131	3	92
012-012	23042	13	26	1N82AG	28107	6	9
012-013	23042	3	16	1N82AG	28107	8	7
012-013	23042	8	2	1N82AG	28107	10	6
012-023	23042	3	7	1N82AG	28107	13	19
012-024	23042	3	9	1ZS10A	75042	11	11
012-034	23042	5	19	101402	73734	17	3
012-035	23042	13	34	101402	73734	18	2
012-043	23042	6	5	102212	73734	18	11
012-043	23042	12	10	104310	73734	18	20
012-050	23042	12	7	108301	73734	16	28
012-052	23042	3	3	12003NP	73734	18	5
012-085	23042	12	11	12020NP	73734	13	27
012-092	23042	12	5	12020NP	73734	14	17
012-144	23042	6	7	12021NP	73734	2	1
012-211	23042	19	16	12021NP	73734	5	10
012-256	23042	12	8	12021NP	73734	7	7
018-012	23042	15	28	12021NP	73734	9	7
019-004	23042	16	42	12021NP	73734	11	16
020-119	23042	19	9	12021NP	73734	13	22
021-037	23042	19	13	12021NP	73734	16	29
0212-004-09	23042	3	104	12022NP	73734	16	31
023-023	23042	6	8	12022NP	73734	17	2
023-024	23042	8	6	12023NP	73734	11	13
023-025	23042	10	5	12023NP	73734	13	37
025-041	23042	19	4	12027NP	73734	18	18
028-006	23042	15	20	12029NP	73734	14	23
029-007	23042	3	97	12041NP	73734	2	9
035-007	23042	5	7	12041NP	73734	13	2
035-007	23042	6	11	12043NP	73734	2	7
035-019	23042	10	9	12043NP	73734	3	108
035-024	23042	12	14	12043NP	73734	4	13

TM11-6625-2575-24P
SECTION IV
NATIONAL STOCK NUMBER AND PART NUMBER INDEX

PART NUMBER	FSCM	FIG NO	ITEM NO	PART NUMBER	FSCM	FIG NO	ITEM NO
12046NP	73734	4	18	2022C	83330	3	101
12062NP	73734	16	35	2022C	83330	12	35
121100	73734	16	16	2022C	83330	13	21
1302NP	73734	2	4	2032B	83330	3	103
1302NP	73734	4	25	2032B	83330	4	17
1302NP	73734	5	9	212-25182-1VC	71450	16	17
1302NP	73734	7	8	212-25211-3-3	71450	16	26
1302NP	73734	9	8	212A19436-2-2VC	71450	16	20
1302NP	73734	13	23	2185NP	73734	2	22
1302NP	73734	16	30	2185NP	73734	3	105
1304NP	73734	2	10	22-0-OH1021	98053	13	8
1304NP	73734	3	109	225P10391WB3	80183	3	10
1304NP	73734	4	14	3P	06229	15	4
1304NP	73734	13	3	30D107G012DC4	56289	3	5
1305NP	73734	1	2	30D107G025DD2	56289	3	13
1305NP	73734	16	34	312001	75915	16	45
1306NP	73734	2	23	32-00169	07700	15	10
1315NP	73734	5	13	342012	75915	16	44
1315NP	73734	7	10	3531	12715	16	47
1315NP	73734	9	11	38100	73734	13	29
1315NP	73734	11	7	4001NP	73734	17	6
1315NP	73734	15	62	40362	95303	3	23
1315NP	73734	16	14	404-8-60PF	84171	12	1
1315NP	73734	17	10	4426-4K	82142	15	50
1315NP	73734	18	15	4426-6K	82142	6	10
1711C	72653	11	1	4426-6K	82142	8	8
18408NP	73734	18	17	4426-6K	82142	10	7
1900	73734	15	52	4436-4K	82142	10	8
1901NP	73734	15	35	5069-1	09408	16	13
1910NP	73734	4	22	5070-1	09408	1	15
1910NP	73734	14	20	5070-1	09408	2	16
1950NP	73734	4	23	5327	09408	18	4
1958	73734	15	8	6063-001-634	72765	2	19
1958	73734	16	12	8003NP	73734	13	31
2N3053	95303	3	24	8003NP	73734	17	12
2N3440	95303	3	26	8006NP	73734	2	8
2N3564	04713	6	13	8006NP	73734	4	15
2N3564	04713	8	10	8006NP	73734	11	20
2N3564	04713	10	11	8009NP	73734	11	2
2N3565	28584	3	27	8011NP	73734	2	24
2N3565	28584	6	12	8280K16	00752	16	7
2N3567	04713	8	9	9020NP	73734	5	12
2N3567	04713	10	10	9020NP	73734	7	11
2N3568	80131	3	28	9020NP	73734	9	10
2N3644	28584	3	30	9020NP	73734	11	6
2N3644	28584	4	6	9020NP	73734	15	64
2N4429	01281	11	9	9020NP	73734	16	15
2N4919	04713	16	41	9020NP	73734	17	9
2N5109	95303	12	15	9020NP	73734	18	16
201-41-06-243	71785	4	5	9027NP	73734	1	17
2014A	83330	3	106	9027NP	73734	2	18
2020B	83330	3	102	9027NP	73734	16	6

LATEST NATIONAL STOCK NUMBER ASSIGNMENTS

STOCK NUMBER	FIG NO	ITEM NO
5340-00-816-3422	11	1
5935-00-838-8470	11	17
5935-00-838-8470	13	28

RECOMMENDED CHANGES TO EQUIPMENT TECHNICAL PUBLICATIONS



THEN... JOT DOWN THE DOPE ABOUT IT ON THIS FORM. CAREFULLY TEAR IT OUT. FOLD IT AND DROP IT IN THE MAIL!

SOMETHING WRONG WITH THIS PUBLICATION?

FROM (PRINT YOUR UNIT'S COMPLETE ADDRESS)
 Commander
 Stateside Army Depot
 ATTN: AMSTA-US
 Stateside, NJ 07703

DATE SENT 10 July 1975

PUBLICATION NUMBER
 TM 11-5840-340-20P

PUBLICATION DATE
 23 Jan 78

PUBLICATION TITLE
 Radar Set AN/PRC-76

BE EXACT PIN-POINT WHERE IT IS

PAGE NO	PARA-GRAPH	FIGURE NO	TABLE NO
33			
44		19	
45			

IN THIS SPACE TELL WHAT IS WRONG AND WHAT SHOULD BE DONE ABOUT IT:

For item 2, change the NSN to read: 5835-00-134-9186.
Reason: Accuracy.

Identify the cover on the junction box (item no. 5).
Reason: It is a separate item and is not called out on figure 19.

Add the cover of the junction box as an item in the listing for figure 19.
Reason: Same as above.

SAMPLE

PRINTED NAME, GRADE OR TITLE, AND TELEPHONE NUMBER

SSG I.M. DeSpirito 999-1776

SIGN HERE

SSG I. M. DeSpirito

TEAR ALONG DOTTED LINE

FILL IN YOUR
UNIT'S ADDRESS

FOLD BACK

DEPARTMENT OF THE ARMY

OFFICIAL BUSINESS

Commander
US Army Communications and
Electronics Materiel Readiness Command
ATTN: DRSEL-ME-MQ
Fort Monmouth, New Jersey 07703

TEAR
ALONG THIS LINE

RECOMMENDED CHANGES TO EQUIPMENT TECHNICAL PUBLICATIONS



THEN... JOT DOWN THE DOPE ABOUT IT ON THIS FORM. CAREFULLY TEAR IT OUT. FOLD IT AND DROP IT IN THE MAIL!

SOMETHING WRONG WITH THIS PUBLICATION?

FROM: (PRINT YOUR UNIT'S COMPLETE ADDRESS)

DATE SENT

PUBLICATION NUMBER

TM 11-6625-2575-24P

PUBLICATION DATE

30 Jun 80

PUBLICATION TITLE Generator, Sweep
Signal AN/USM-203A

BE EXACT PIN-POINT WHERE IT IS

PAGE NO	PARA-GRAPH	FIGURE NO	TABLE NO
---------	------------	-----------	----------

IN THIS SPACE TELL WHAT IS WRONG AND WHAT SHOULD BE DONE ABOUT IT:

TEAR ALONG PERFORATED LINE

PRINTED NAME, GRADE OR TITLE, AND TELEPHONE NUMBER

SIGN HERE

FILL IN YOUR
UNIT'S ADDRESS

FOLD BACK

DEPARTMENT OF THE ARMY

OFFICIAL BUSINESS

Commander
US Army Communications and
Electronics Materiel Readiness Command
ATTN: DRSEL-ME-MQ
Fort Monmouth, New Jersey 07703

RECOMMENDED CHANGES TO EQUIPMENT TECHNICAL PUBLICATIONS



THEN... JOT DOWN THE DOPE ABOUT IT ON THIS FORM. CAREFULLY TEAR IT OUT. FOLD IT AND DROP IT IN THE MAIL!

SOMETHING WRONG WITH THIS PUBLICATION?

FROM: (PRINT YOUR UNIT'S COMPLETE ADDRESS)

DATE SENT

PUBLICATION NUMBER

TM 11-6625-2575-24p

PUBLICATION DATE

30 Jun 80

PUBLICATION TITLE Generator, Sweep
Signal AN/USM-203A

BE EXACT PIN-POINT WHERE IT IS

PAGE NO

PARA-GRAPH

FIGURE NO

TABLE NO

IN THIS SPACE TELL WHAT IS WRONG AND WHAT SHOULD BE DONE ABOUT IT:

TEAR ALONG PERFORATED LINE

PRINTED NAME, GRADE OR TITLE, AND TELEPHONE NUMBER

SIGN HERE

DA FORM 2028-2
1 JUL 79

PREVIOUS EDITIONS ARE OBSOLETE.

P.S.—IF YOUR OUTFIT WANTS TO KNOW ABOUT YOUR RECOMMENDATION MAKE A CARBON COPY OF THIS AND GIVE IT TO YOUR HEADQUARTERS.

FILL IN YOUR
UNIT'S ADDRESS

FOLD BACK

DEPARTMENT OF THE ARMY

OFFICIAL BUSINESS

Commander
US Army Communications and
Electronics Materiel Readiness Command
ATTN: DRSEL-ME-MQ
Fort Monmouth, New Jersey 07703

TEAR
SEPARATED UNIT

RECOMMENDED CHANGES TO EQUIPMENT TECHNICAL PUBLICATIONS



THEN... JOT DOWN THE DOPE ABOUT IT ON THIS FORM. CAREFULLY TEAR IT OUT. FOLD IT AND DROP IT IN THE MAIL!

SOMETHING WRONG WITH THIS PUBLICATION?

FROM: (PRINT YOUR UNIT'S COMPLETE ADDRESS)

DATE SENT

PUBLICATION NUMBER

TM 11-6625-2575-24P

PUBLICATION DATE

30 Jun 80

PUBLICATION TITLE Generator, Sweep Signal AN/USM-203A

BE EXACT PIN-POINT WHERE IT IS

PAGE NO	PARA-GRAPH	FIGURE NO	TABLE NO
---------	------------	-----------	----------

IN THIS SPACE TELL WHAT IS WRONG AND WHAT SHOULD BE DONE ABOUT IT:

TEAR ALONG PERFORATED LINE

PRINTED NAME, GRADE OR TITLE, AND TELEPHONE NUMBER

SIGN HERE

DA FORM 2028-2
1 JUL 79

PREVIOUS EDITIONS ARE OBSOLETE.

P.S. - IF YOUR OUTFIT WANTS TO KNOW ABOUT YOUR RECOMMENDATION MAKE A CARBON COPY OF THIS AND GIVE IT TO YOUR HEADQUARTERS.

FILL IN YOUR
UNIT'S ADDRESS

FOLD BACK

DEPARTMENT OF THE ARMY

OFFICIAL BUSINESS

Commander
US Army Communications and
Electronics Materiel Readiness Command
ATTN: DRSEL-ME-MQ
Fort Monmouth, New Jersey 07703

TRAIL
SEPARATE LINE

By Order of the Secretary of the Army:

E. C. MEYER
General, United States Army
Chief of Staff

Official:

J. C. PENNINGTON
Major General, United States Army
The Adjutant General

Distribution:

To be distributed in accordance with DA Form 12-32, Section II, and Section III, Direct and General Support Maintenance requirements for the FAAR System, and Direct and General Support Maintenance requirements for AN/FPA-15 and AN/FPA-16, and DA Form 12-36, Section I, Direct and General Support Maintenance requirements for AN/TPN-8, AN/TPN-18, AN/TSQ-71 , AN/TSQ-72.

